



# HIGHER EDUCATION GUIDE 2025/26

IMPROVE YOUR  
✓ PROSPECTS  
WITH A  
UNIVERSITY  
DEGREE >>>



# STUDY HIGHER EDUCATION AT COLEG GWENT

I'm delighted you're considering studying at Coleg Gwent. In this prospectus, you'll find a growing number of higher education courses available across all five of our campuses. We offer a range of courses in partnership with expert universities across a range of subjects including Equine and Animal Health, Art & Design, Media and Photography, Computing and Digital Technology, Construction and the Built Environment, Education and Training, Specialist Make Up and Complementary Therapies, Engineering, Health and Care, Music, Science and Sport, Hospitality and Public Services.

As one of Wales' largest colleges with a student community of over 16,000 learners, we welcome students from all backgrounds at various stages in their lives.

Studying a higher education course at Coleg Gwent can open up professional networks and expand your opportunities, whether you want to gain an advantage in the fiercely competitive job market, advance in your current career or explore a new career path...

We're here to support you every step of the way.

**Angela Lewis**  
Head of Higher Education



# **CONTENTS**

- 2** WELCOME
- 4** WHY CHOOSE COLEG GWENT?
- 6** HIGHER EDUCATION ALUMNI
- 8** OPEN EVENTS
- 10** CAMPUSES
- 14** SUPPORTING YOU
- 15** CAREERS AND EMPLOYABILITY
- 16** A FOCUS ON FINANCE
- 18** YOUR GUIDE TO QUALIFICATIONS
- 20** EQUINE & ANIMAL HEALTH
- 22** ART & DESIGN, MEDIA AND PHOTOGRAPHY
- 24** COMPUTING & DIGITAL TECHNOLOGY
- 26** CONSTRUCTION AND THE BUILT ENVIRONMENT
- 29** EDUCATION AND TRAINING
- 30** ENGINEERING
- 32** SPECIALIST MAKE UP AND COMPLEMENTARY THERAPIES
- 34** HEALTH AND CARE
- 36** MUSIC
- 38** SCIENCE
- 40** SPORT, HOSPITALITY AND PUBLIC SERVICES
- 42** ACCESS TO HIGHER EDUCATION
- 44** HOW TO APPLY

# WHY CHOOSE

# »» COLEG GWENT?

## GET THE UNIVERSITY EXPERIENCE

Our strong partnerships with our universities means that you will have access to each university's facilities, online resources and their students union.

On completion, you'll receive a certificate awarded by the university, and you'll even be invited to their graduation ceremony.



Cardiff  
Metropolitan  
University

Prifysgol  
Metropolitan  
Caerdydd



Pearson

## FIVE DISTINCT AND LOCAL CAMPUSES



We offer the biggest range of Higher Education courses in a further education college in Wales, and they are available across all five of our campuses.

## SAVE MONEY

Our Higher Education courses cost around £7,500, which is cheaper than most universities, saving you thousands of pounds.

We also offer a range of grants to support your studies.



Apply now at [www.coleggwent.ac.uk](http://www.coleggwent.ac.uk)





# QUALITY EDUCATION

Led by The Quality Assurance Agency for Higher Education (QAA), Coleg Gwent was praised across all UK academic requirements with no identified areas for improvement or development.

# APPLY DIRECT

Most of our courses don't require application through UCAS. So, you can forget about writing that lengthy personal statement.



# GREAT OPPORTUNITIES

Our specialist courses will provide you with career-oriented skills and specific industry experience that employers look for, increasing your chances of securing your dream job.



# EXCELLENT FACILITIES

You'll have access to specialist facilities at all sites, including our HE hubs.

You will also be able to access the facilities of the partner university.



# PERSONALISED SUPPORT

We offer excellent support with a dedicated team of support staff to help guide you through your studies.

Our smaller class sizes ensure you'll receive excellent personal support from lectures.

# HIGHER EDUCATION ALUMNI >>

## DON'T JUST TAKE OUR WORD FOR IT...

“

The courses at Coleg Gwent gave me a better understanding of all sides of construction and they also provided me with great employer links and experience to make me more employable. Since leaving college, I have continued my studies and I'm now in my final year of my Degree. In July 2024, I will fulfil my ambitions and become a fully qualified Quantity Surveyor. I couldn't have done this without the support provided to me. Coleg Gwent has provided me with the knowledge, skillset and understanding to perform throughout my university course and beyond.

”



**BEN ROBERTS**  
**HNC & HND - CONSTRUCTION IN**  
**THE BUILT ENVIRONMENT**



**MEET BEN**



“

My Higher Education journey started at Coleg Gwent, studying a Foundation Degree in Animal Health and Welfare. I then pursued the Level 3 work-based diploma in Veterinary Nursing at the college. Studying locally allowed me to balance work and study. I was keen to explore different avenues within my profession, and so I transitioned from veterinary practice to teaching veterinary nursing at Coleg Gwent, a role that has been incredibly rewarding. To further my qualifications, I completed my Professional Certificate in Education and Training (PcET) at the college (validated by USW), and I am set to graduate this year.

Studying Higher Education at Coleg Gwent offers a personable and relaxed environment. The supportive environment and comprehensive programs have been pivotal in my educational and professional journey, enabling me to achieve my goals.

”

**THEONA ARISTIDOU****FOUNDATION DEGREE ANIMAL HEALTH AND WELFARE****FOUNDATION DEGREE VETERINARY NURSING****MEET THEONA**

# OPEN EVENTS

Our open events are the perfect way to explore our campus and facilities, talk to our award-winning lecturers, and learn about student finance and support services.



## ON CAMPUS OPEN EVENTS

- »» **WEDNESDAY 13TH NOV 2024**  
5-7.30PM
- »» **TUESDAY 28TH JAN 2025**  
5-7.30PM
- »» **SATURDAY 22ND MARCH 2025**  
10AM-12.30PM
- »» **TUESDAY 24TH JUNE 2025**  
5-7.30PM
- »» **FRIDAY 29TH AUGUST 2025**  
1.30-4PM  
ADVICE AND GUIDANCE EVENT
- »» **VIRTUAL OPEN EVENT -  
HIGHER EDUCATION**  
WED 20 AUG 2025 6PM

## REGISTER FOR ONE OF OUR OPEN EVENTS

Make sure you choose the right campus as some courses only run at certain campuses. You can check where your chosen course is based on our website.

»» [COLEGGWENT.AC.UK/OPEN](https://coleggwent.ac.uk/open)

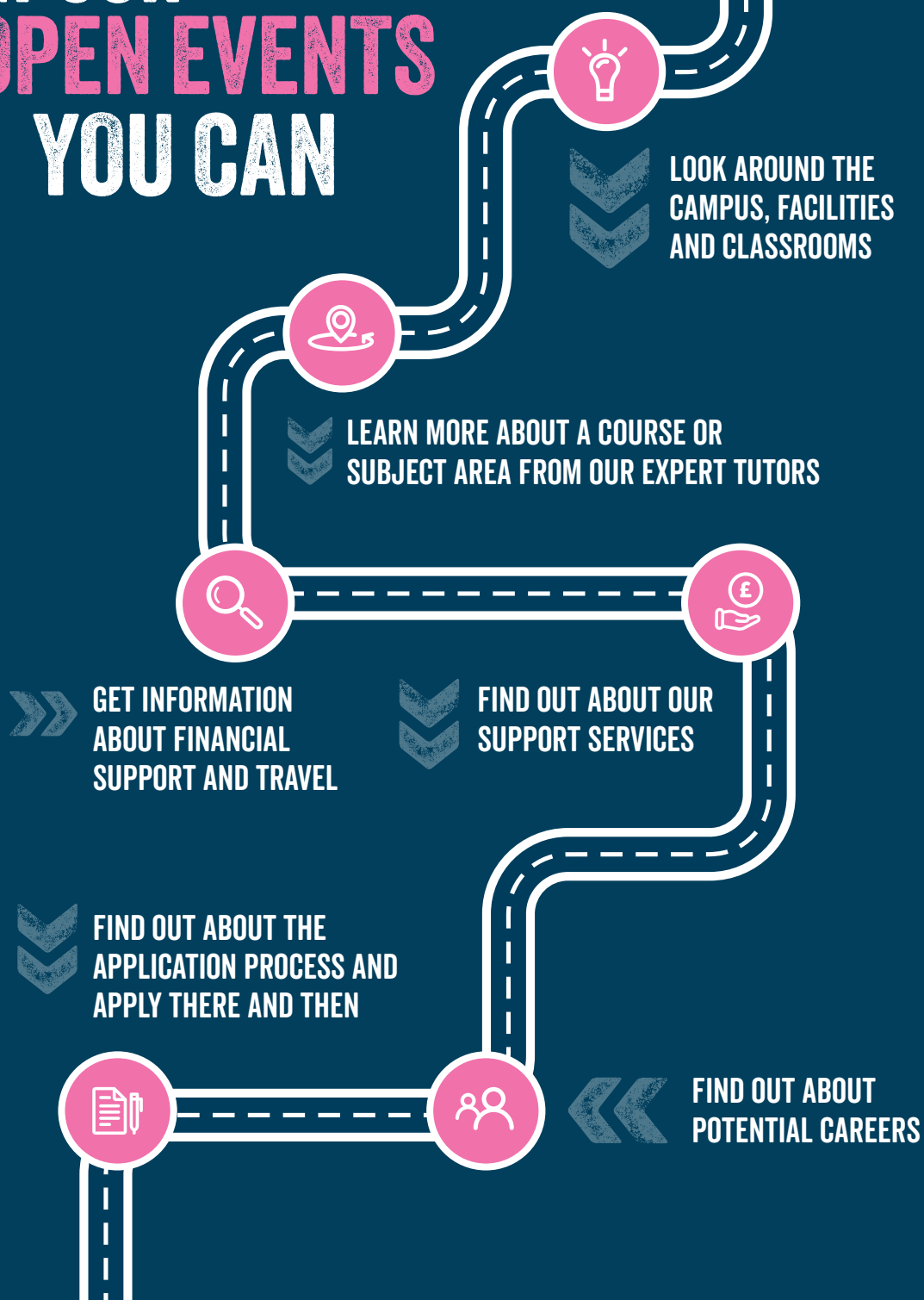
## DID YOU KNOW?

We also offer applicant days to give you a chance to meet us before starting your course. Applicant days are tailored to you, to make sure you get the information you need.





# AT OUR OPEN EVENTS YOU CAN



# CAMPUSES

At Coleg Gwent we have five vibrant and diverse campuses to choose from, so we're confident you'll find a location that's right for you.

## TORFAEN LEARNING ZONE

Torfaen Learning Zone is our newest, purpose built campus with state-of-the-art science laboratories, performance theatre and much more. It's easily accessible via public transport in the heart of Cwmbran and boasts a spacious auditorium and work spaces.

T



Apply now at [www.coleggwent.ac.uk](http://www.coleggwent.ac.uk)





U

## USK CAMPUS

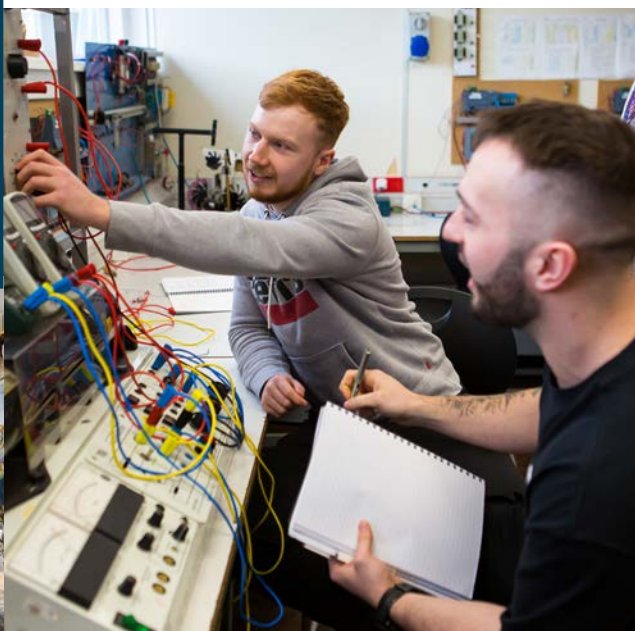
Our rural centre in Usk is home to our landbased, veterinary nursing and fitness courses. The campus is equipped with a state-of-the-art vet nurse training centre, an animal care centre, indoor and outdoor equine schools, a fully functioning gym, sports pitches and a performance analysis suite.



## CROSSKEYS CAMPUS

C

Our largest campus boasts impressive theatre facilities for performing arts, a state of the art photography studio, mac editing suites, recording studios, and illustration and ceramics studios and Blŵm hair and beauty salon which is open to the public.





# CAMPUSES

## BLAENAU GWENT LEARNING ZONE

B



Blaenau Gwent's cutting-edge Learning Zone hosts a wide higher education courses including a cyber hub, performance theatre, Blŵm hair and beauty Salon, engineering suites, construction workshops and much more.



## HIGHER EDUCATION HUBS

At our campuses you will find a dedicated space solely for Higher Education students with computers, breakout areas and sofas for quiet study or unwinding.



## CITY OF NEWPORT CAMPUS

Our City of Newport campus hosts fantastic facilities, including well-equipped engineering and construction workshops, art studios, science laboratories, Blwm hair and beauty salon, and an innovative digital technology suite.

N



## HIVE ENGINEERING CENTRE (COMING SOON)

Our new High Value Engineering (HiVE) Centre in Ebbw Vale is due to open at the former Monwel factory site in 2025. With a growing need for STEM knowledge and skills in the local economy, it's Coleg Gwent's ambition to educate the workforce of the future in a dedicated facility where learners will be surrounded by innovation and technology reflective of industry.



# SUPPORTING YOU

As a Coleg Gwent student, you'll have access to a whole host of support services, including:



## FAITH AND SPIRITUALITY SUPPORT

With meditation and prayer rooms on each campus.

## WELSH AND BILINGUAL STUDY SUPPORT

Our 'HWB Cymraeg' offers one-to-one support for studying in Welsh or bilingually.



## WELLBEING SUPPORT

We have a dedicated support team at each campus to provide financial support, help dealing with stress and anxiety, help managing your workload and much more.



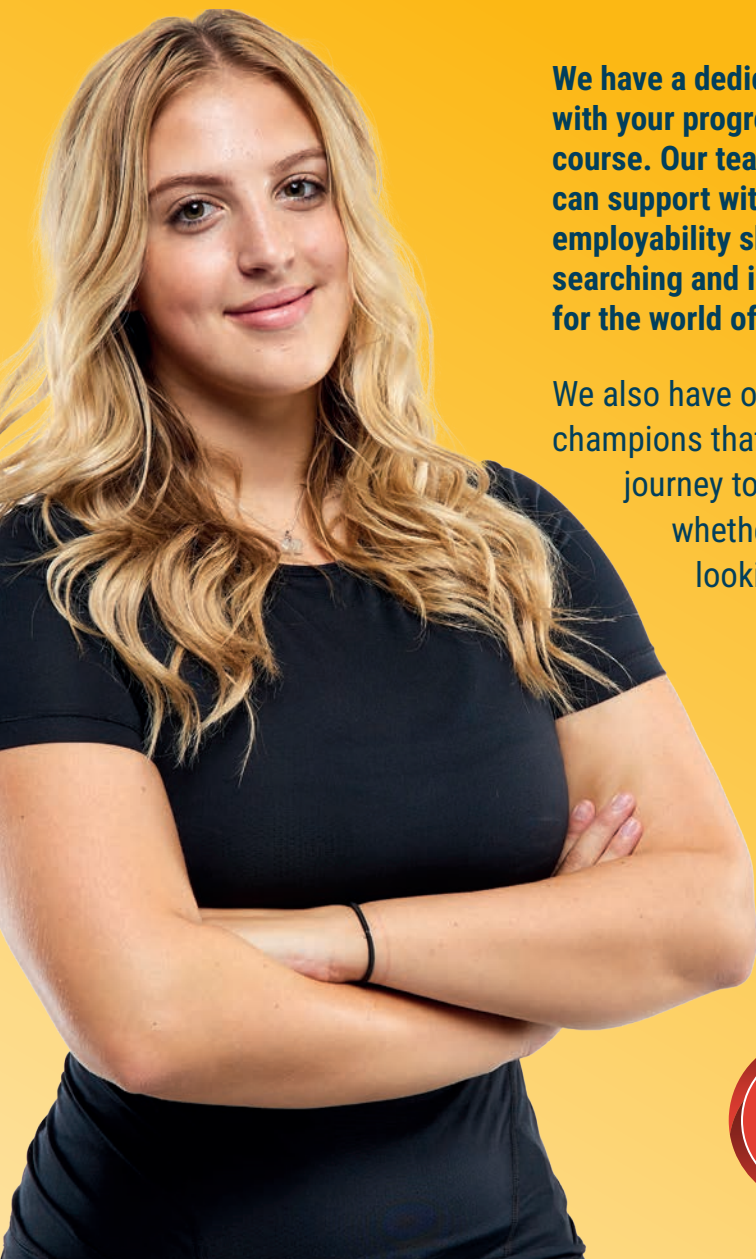
Togetherall is an online community for mental health support, with 24/7 access to trained professionals. Togetherall will help you manage mental health conditions, take control, feel better and maintain positive wellbeing while you're at college.



## ADDITIONAL LEARNING NEEDS (ALN)

If you have a registered learning difficulty and/or a disability, we can offer you a variety of support services including in-class support from an Additional Support Assistant (ASA), help from a Communication Support Worker (for deaf students), dyslexia support, additional study support and sessions and access arrangements for exams.

# CAREERS AND EMPLOYABILITY >>>



We have a dedicated team who will help you with your progression once you finish your course. Our team of progression coaches can support with personal statements, employability skills such as CV writing, job searching and interview tips to get you ready for the world of work.

We also have our very own enterprise champions that can support you on your journey to becoming an entrepreneur, whether you're just starting out or looking to grow your business.



# A FOCUS ON FINANCE



Here's how much it will cost.

Qualification	Accrediting University	Cost
Foundation Degree HNC HND	University of South Wales, Aberystwyth University and Cardiff Metropolitan University	£7,500
PCET (Post Certificate in Education Training)	University of South Wales	£2,700
Top-up Degree (1 year)	University of South Wales, Aberystwyth University and Cardiff Metropolitan University	£9,000
Higher Education Qualifications by Pearson	Pearson	Please refer to the individual course information on our website as they have variable fees.

These course fees are correct as of June 2024 and may be subject to change.





## FULL TIME HIGHER EDUCATION STUDENTS

If you live in Wales, you can get a tuition fee loan up to a maximum of £9,250. The tuition fee loan isn't based on your household income.

## PART TIME HIGHER EDUCATION STUDENTS

If you live in Wales, you can apply for a non-means tested fee loan of up to £2,625 to cover your annual fees. You will need to be studying at a minimum 25% intensity to be eligible.

Whether you're studying full time or part time, in addition to your tuition fee loan, you can also apply for maintenance support (help with living costs).

**Full details on financial support and how to apply can be found on the student finance Wales website:**

[www.studentfinancewales.co.uk](http://www.studentfinancewales.co.uk)

**If you live in England, visit:**

[www.gov.uk/student-finance](http://www.gov.uk/student-finance)

## CHECK YOU'RE ELIGIBLE

If you've already studied a higher education course, it will affect your eligibility. You will need to apply for student finance before you start your study with us, so the sooner you do this the better!

## OTHER FINANCIAL SUPPORT

You may be eligible for bursaries, grants or subsidies to support you while you study, the eligibility criteria is dependent on your circumstances.

### Other financial support available:

- Disabled Students Allowance
- Adult dependant's grant
- Childcare grant
- Parents allowance grant

**To learn more, take a look at our website:**

**[WWW.COLEGGWENT.AC.UK/HE](http://WWW.COLEGGWENT.AC.UK/HE)**



# YOUR GUIDE TO



# QUALIFICATIONS AND ENTRY REQUIREMENTS

**Not sure what qualification you're looking for, or what level to start at? Here's a handy guide to help you understand what each qualification is and to help you choose the right qualification for you and your goals.**



## FOUNDATION DEGREE

A Foundation Degree is a level 5, university level qualification that combines academic study with workplace learning and are broadly equivalent to the first two years of a degree. They are designed with a particular area of work in mind, with the help of organisations from each sector. Once you've achieved a Foundation Degree, you can 'top-up' your qualification with another 1/2 year 'top-up' course at the end to obtain a full bachelor's degree.

## HNC (HIGHER NATIONAL CERTIFICATE)

A HNC is a level 4 work-related course and is highly valued by employers both in the UK and overseas. While bachelor's degrees tend to focus on gaining knowledge, a HNC's is designed to give you the skills to put that knowledge to effective use in a particular vocation. Some HNC's allow direct entry into the second year of a degree programme. So, whether you want to go straight into a job or continue your studies, getting a Higher National qualification can be a great place to start.

## HND (HIGHER NATIONAL DIPLOMA)

A HND is a level 5 work-related course and is very similar to a HNC – only a little more advanced. You will study industry relevant skills and knowledge that will set you up for your chosen vocation. Many HND's allow direct entry to the third year of a degree and can also give you access to a number of professional bodies.



## DEGREE TOP-UPS

A degree Top-up is the equivalent to the final year of undergraduate study, giving you a full Bachelor's Degree. As the name suggests, these courses give you the option to 'top-up' an existing qualification, whether that's a Foundation Degree or another relevant qualification, like a HND. Every course has its own entry requirements, so check the course you're interested in to find out exactly what you'll need to be able to apply. In addition, make sure you check your eligibility for continued student finance.

## ACCESS TO HIGHER EDUCATION

An Access to Higher Education course is a level 3 course designed to prepare learners with the skills needed to pursue higher level study. An Access course is ideal for mature learners who want to change career or are returning to study. The course has been designed to ensure that you're prepared for studying at a university level. You can study full time or part time and you can choose a course suited to your career pathway.

## ENTRY REQUIREMENTS

Applications to all courses are considered on an individual basis. We accept combinations of qualifications as well as previous relevant experience that's either from the workplace, or your personal life. You can look at course entry requirements on the individual course pages on our website.

Not sure if you meet the entry requirements? Don't let the entry requirements put you off, if you're unsure please get in touch with us via [he@coleggwent.ac.uk](mailto:he@coleggwent.ac.uk)

## RECOGNITION OF PRIOR LEARNING

RPL provides you with an opportunity to gain recognition for previous relevant academic achievements and allows credits to be transferred to the new course to avoid the duplication of previous learning. Successful applicants must demonstrate they have previously achieved the learning outcomes for the module.

**Visit our website for more information:**  
[www.coleggwent.ac.uk/he](http://www.coleggwent.ac.uk/he)



# EQUINE & ANIMAL HEALTH

If you have a passion for animals, why not make a career out of it? Take the reins and study one of our equine or animal health courses at our beautiful, rural based campus in Usk.

Employers look for relevant experience and you'll get plenty of it at our Usk campus. We have well established courses with the University of South Wales and Aberystwyth University so no matter what course you choose, you'll have access to all the facilities you'd expect to find in this industry. You may have the option to study for another year full or part time with your chosen university to top up to a full Bachelor's Degree, or you could take your Foundation Degree as a standalone qualification and get work in areas such as veterinary practice, animal behaviour and psychology.

## DID YOU KNOW?

Argonomists in the UK earn up to

# £60,000

a year

(0\*Net Pathways)



## POTENTIAL CAREERS



Animal Behaviourist



Animal Technician



Equine Manager



Horticultural Manager



Veterinary Nurse



# OUR COURSES

	Award	Validating Institution	Full Time/ Part Time	Campus
<b>Animal Health &amp; Welfare</b>	BA Top-up	University of South Wales	FT	<b>U</b>
<b>Animal Health &amp; Welfare</b>	FD	University of South Wales	FT	<b>U</b>
<b>Equine Studies</b>	BA Top-up	Aberystwyth University	FT	<b>U</b>
<b>Equine Studies</b>	FD	Aberystwyth University	FT	<b>U</b>
<b>Veterinary Nursing</b>	BA Top-up	University of South Wales	FT	<b>U</b>
<b>Veterinary Nursing</b>	FD	University of South Wales	FT	<b>U</b>

Please note: all courses may be subject to change and cancelled if deemed not viable to run.

“ At Coleg Gwent, they have fantastic lecturers and facilities including an indoor and outdoor arena and some incredible horses! It's local, so it's given me the opportunity to study a really good qualification basically on my doorstep. The class sizes are much smaller than what you would have at a most universities, so it's on a much more personal level with your lecturers. I would definitely recommend a Higher Education course at Coleg Gwent. ”



**JORDAN WHITTAKER**  
FOUNDATION DEGREE EQUINE STUDIES



# ART & DESIGN,

## MEDIA & PHOTOGRAPHY

**Creative industries are growing faster than any other area of the UK economy – which is great news for talented art, design, media and photography graduates.**

If you have a passion for the creative arts, our spacious studios for art, design, fashion, media and photography are the ideal place to express yourself, experiment with a range of techniques and perfect your specialism.

## POTENTIAL CAREERS



**Ceramics Designer**



**Director of Photography**



**Games Designer**



**Graphic Designer**



**Illustrator**

## DID YOU KNOW?

# 35,400

**people are employed in the creative industries in Wales**

(Careers Wales 2024)

## WANT TO CONTINUE YOUR STUDIES?

You can study an extra year and top-up to a full degree in Illustration or Photography with us.

# OUR COURSES

	Award	Validating Institution	Full Time/ Part Time	Campus
<b>Artist Designer Makers</b>	FD	Cardiff Metropolitan University	FT	<b>C</b>
<b>Games Art &amp; Design</b>	FD	University of South Wales	FT	<b>C</b>
<b>Illustration</b>	FD	University of South Wales	FT	<b>C</b>
<b>Illustration</b>	BA Top-up	University of South Wales	FT	<b>C</b>
<b>Media Production</b>	FD	University of South Wales	FT	<b>C</b>
<b>Photography</b>	FD	Cardiff Metropolitan University	FT	<b>C</b>
<b>Photography</b>	BA Top-up	Cardiff Metropolitan University	FT	<b>C</b>

Please note: all courses may be subject to change and cancelled if deemed not viable to run.

“

I decided to study Games Art & Design at Coleg Gwent because it's much cheaper than other universities. It's a really good course - the modules allow you to be really creative. The tutors are great and create a nice atmosphere in the classroom.

”



**THOMAS MORTON**  
FOUNDATION DEGREE  
GAMES ART & DESIGN



**MEET THOMAS**

# » COMPUTING & DIGITAL TECHNOLOGY »

**By studying a higher education course in computing or digital technologies, you can equip yourself with the skills needed for a rewarding career and access to state-of-the-art equipment.**

The technology industry is rapidly expanding and constantly evolving. Due to a shortage of skilled workers, numerous job opportunities are available, making this a highly attractive industry for graduates.

“ Coleg Gwent offer a lot of great opportunities including great work placement opportunities. The class sizes are smaller than university and you get to know the tutors well. After finishing my course, I'd like to progress to do my Bachelor's top-up degree and further from there, possibly find a job within the IT sector, such as system support or networking. ”



**NICHOLAS MALOLEPSZY**  
HND COMPUTING



**MEET NICHOLAS**



# OUR COURSES

	Award	Validating Institution	Full Time/ Part Time	Campus
Computing	HND	University of South Wales	FT	<b>N</b>
Cyber Security	HND	University of South Wales	FT	<b>B</b>
Cyber Security	HNC	University of South Wales	FT	<b>B</b>

Please note: all courses may be subject to change and cancelled if deemed not viable to run.



## POTENTIAL CAREERS



**Cyber Intelligence Officer**



**Forensic Computer Analyst**



**IT Director**



**IT Technician**



**Network Engineer**

## DID YOU KNOW?

IT Directors can earn up to

**£140,000**

**a year**

(0\*Net Pathways, 2024)



# CONSTRUCTION &

## THE BUILT ENVIRONMENT

Design and build your future in the world of construction.

If you want to play a part in changing skylines or influencing architecture, you'll learn the latest techniques and principles to equip you for a career in construction and the built environment through our HNC and HND courses.



## POTENTIAL CAREERS



Architect



Building Services Engineer



CAD Technician



Chartered Surveyor

## DID YOU KNOW?

Building Surveyors can earn up to

# £70,000

a year

(0\*Net Pathways, 2024)



# OUR COURSES

	Award	Validating Institution	Full Time/ Part Time	Campus
Construction and the Built Environment	HNC	University of South Wales	PT	N
Construction and the Built Environment	HND	University of South Wales	PT	N

Please note: all courses may be subject to change and cancelled if deemed not viable to run.



## MEET BEN

“

I started at level 3 then easily progressed onto the HNC and HND. The course gave me a better understanding of construction as well as an introduction to employers, which will hopefully make me more employable. The class sizes are smaller and it's more one-to-one tuition, which really helped!

”



**BEN ROBERTS**  
**HND CONSTRUCTION AND  
THE BUILT ENVIRONMENT**



# »» EDUCATION & TRAINING ««

**Do you want to make a difference to someone's life by teaching? A teaching career can be exciting, rewarding, offer you variety, and the opportunity to improve the prospects of others.**

Our courses qualify you to teach those over 16 years of age so you'll need to be able to relate well to students of all ages and abilities, as the profile of potential students is extremely broad. Once qualified, you could be teaching school leavers who want to go to university, adults looking to retrain or people returning to the classroom after years out of education.

“

I would recommend Coleg Gwent because the people you meet are fantastic.

My personal tutor was supportive and professional, and I was comfortable talking to him about anything. During placement, I received effective feedback that I was able to apply to teaching.

”



**MACEY JONES**  
PCET



**MEET MACEY**



# OUR COURSES

	Award	Validating Institution	Full Time/ Part Time	Campus
<b>Post compulsory Education and Training (PcET)</b>	Professional Certificate	University of South Wales	PT	<b>B</b>
<b>Post compulsory Education and Training (PcET)</b>	Professional Graduate Certificate (PGCE)	University of South Wales	PT	<b>B</b>

Please note: all courses may be subject to change and cancelled if deemed not viable to run.



## POTENTIAL CAREERS



**Academic Advisor**



**Faculty Director**



**Further Education Lecturer**



**Head of School at a college or university**



**Youth Worker**

## DID YOU KNOW?

Further Education teachers can earn up to

# £40,000

**a year**

(0\*Net Pathways, 2024)



# »» ENGINEERING

Engineers play a crucial role in our daily lives, from the phones we use, the deodorant we wear, to the planes we travel in. The sector is diverse, requiring highly skilled professionals who are well-paid.

Mechanical engineers use their knowledge of physics and math to design and maintain components and systems, working with advanced materials such as carbon fiber and composites.

If you're attentive to detail and clued up on the principles, electrical engineering is for you.

## DID YOU KNOW?



Electrical Engineers in Wales  
earn an average of

# £46,000

**a year**

(0\*Net Pathways, 2024)



## POTENTIAL CAREERS



**Aerospace Engineer**



**Civil Engineer**



**Electrical Engineer**



**Ergonomist**



**Mechanical Engineer**

# OUR COURSES

	Award	Validating Institution	Full Time/ Part Time	Campus
Construction & Built Environment	HNC	University of South Wales	PT	N
Construction & Built Environment	HND	University of South Wales	PT	N
Civil Engineering	HNC	University of South Wales	PT	N
Civil Engineering	HND	University of South Wales	PT	N
Electrical & Electronic Engineering	HNC	University of South Wales	PT	C
Electrical & Electronic Engineering	HND	University of South Wales	PT	C
Engineering (Motor Sport)	HNC	University of South Wales	FT	B
Mechanical Engineering	HNC	University of South Wales	PT	C
Mechanical Engineering	HND	University of South Wales	PT	C

Please note: all courses may be subject to change and cancelled if deemed not viable to run.



**MEET HYWEL**

“

My goal is to become an engineer and studying at Coleg Gwent has provided me with the academic qualifications I need. The course is flexible and what you learn is relevant and transferrable to a working environment. The tutors are great and I've got a relationship with them where I feel I can always ask for help.

”



**HYWEL CRUICKSHANK  
HND ENGINEERING**

# SPECIALIST MAKE UP & COMPLEMENTARY THERAPIES



**Our Specialist Make up and Complementary Therapies courses can help you start your dream career!**

Our higher education theatrical make up course will let your creativity shine and give you all the skills you need for an exciting role in the make up industry for film, theatre and television.

“

I like everything about my course. I like the campus and I love the course modules because you can personalise them. I like the tutors because they're so supportive, they give academic help and also point you in the right direction if you need other support such as mental health wellbeing.

”



**EMILY WATKINS  
SPECIALIST MAKE UP**



**MEET EMILY**



# OUR COURSES

	Award	Validating Institution	Full Time/ Part Time	Campus
Specialist Make Up	HND	Pearson	FT	C

Please note: all courses may be subject to change and cancelled if deemed not viable to run.



## POTENTIAL CAREERS



Aromatherapist



Complementary Therapist



Reflexologist



Theatre Make up Artist



TV/Film Make up Artist

## DID YOU KNOW?

As a Senior Special Effects Make up Artist, you could earn up to

£71,596

a year (Salary Expert 2024)



# »» HEALTH & CARE

The care sector provides a diverse range of career opportunities that can be incredibly rewarding and have a positive impact on the lives of others.

Our health care courses can prepare you for a successful career, whether you want to work directly with patients, head up a team to provide top-quality care or influence policy at a national or regional level.

If you prefer a career in childcare, our specialist courses will equip you with the skills, knowledge and hands-on experience necessary for the challenging yet extremely varied and rewarding sector.



## POTENTIAL CAREERS



Childcare Nursery Manager



Community Health and Wellbeing nurse



Health Service Manager



Nurse



Nursery Nurse

## DID YOU KNOW?

Experienced professionals in this sector can earn up to

# £50,000

**a year** (0\*Net Pathways, 2024)

# OUR COURSES

	Award	Validating Institution	Full Time/ Part Time	Campus
Childhood Studies	FD	University of South Wales	FT	<b>B</b>
Childhood Studies	FD	University of South Wales	FT	<b>C</b>
Community Health and Wellbeing	Cert HE	University of South Wales	FT	<b>B</b>
Health, Wellbeing and Social Care Management	FD	University of South Wales	FT	<b>T</b>
Youth & Social Care	FD	University of South Wales	FT	<b>C</b>

Please note: all courses may be subject to change and cancelled if deemed not viable to run.

## MEET CARLY



“

I would recommend higher education at Coleg Gwent because the course has helped me grow so much academically and personally. This would not have happened without the amazing support from my tutors and other students. I feel it has made me so much more confident in all aspects of my life.

”



**CARLY STEPHENS**  
**COMMUNITY HEALTH**  
**AND WELLBEING**

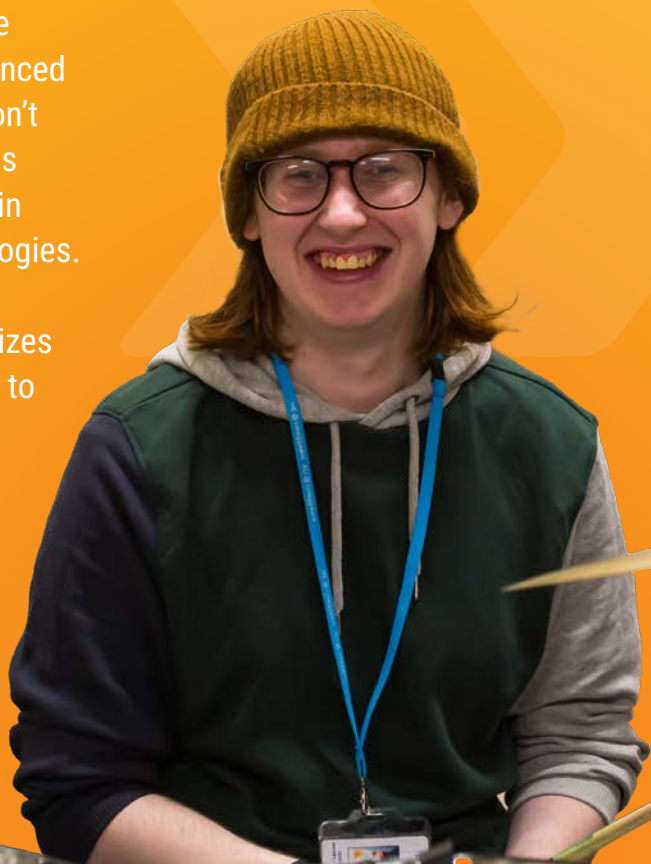
# MUSIC

If you feel at home on the main stage, in the recording studio or writing your own music, then this is the industry for you. Wales is renowned for its rapidly growing creative industries, producing high profile TV shows and well-known musicians and singers.

“ The industry is difficult to get into, so coming to Coleg Gwent has given me the competitive edge as I've experienced a variety of facilities that you won't find elsewhere. The technology is great, and the tutors have skills in both modern and digital technologies. I chose Coleg Gwent over other universities because the class sizes are much smaller, so you're able to make use of the facilities and you get more support from your tutors. ”



LEVI MORGAN  
POPULAR MUSIC





# OUR COURSES

	Award	Validating Institution	Full Time/ Part Time	Campus
Audio Production & Songwriting	BA	University of South Wales	FT	C

Please note: all courses may be subject to change and cancelled if deemed not viable to run.



## POTENTIAL CAREERS



Audio Songwriter



Digital Music Technician



Musician



Music Producer



## DID YOU KNOW?

The average salary for a music producer in the UK is

**£44,164**

**a year** (\*Glassdoor UK 2024)

# » SCIENCE »

Technological and scientific advances are constantly changing the world we live in. During your studies, you will gain practical experience in our industry-standard, purpose-built science facilities. You'll also be taught by our expert lecturers, who have a wealth of experience.

## POTENTIAL CAREERS



**Biomedical Scientist**



**Clinical Scientist CAD**



**Hematology Scientist**



**Laboratory Research and Development manager**



**Laboratory Technician**



## DID YOU KNOW?

**Experienced Forensic Scientists  
can earn up to**

**£45,000**

**a year**

(National Careers Service, 2023)



# OUR COURSES

	Award	Validating Institution	Full Time/ Part Time	Campus
<b>Biomedical Science</b>	HND	Cardiff Metropolitan University	FT	<b>N</b>

Please note: all courses may be subject to change and cancelled if deemed not viable to run.

“

I would recommend a science course at Coleg Gwent because it isn't too overwhelming, there's a lot of free time for independent learning and everything you need is at the College. I enjoy it as a mature student, because the learners in my class are older - we're all a similar age and here for a reason.

”



**ZUZANNA KALEK**  
**ACCESS TO BIOSCIENCES**



**MEET ZUZANNA**

# SPORT, HOSPITALITY & PUBLIC SERVICES



Working in services to people means you're often at the forefront of the industry, so you must have great interpersonal skills. You can follow in the footsteps of your sporting heroes, keep our communities safe with a job in public and emergency services, become a big influence in events and hospitality or set off on a rewarding career in tourism.

“

I would recommend Coleg Gwent because the tutors are great, they have experience in public services and specialise in different areas so you get a broad range of knowledge. The class sizes are smaller so you get more one to one tuition than you would at university.

”



**HUW LLOYD**  
HND PUBLIC AND  
EMERGENCY SERVICES





# OUR COURSES

	Award	Validating Institution	Full Time/ Part Time	Campus
Public & Emergency Services	HND	University of South Wales	FT	<b>C</b>
Sports Conditioning, Rehabilitation & Massage (SCRaM)	FD	Cardiff Metropolitan University	FT	<b>C</b>
Tourism, Hospitality & Events Management	HND	Cardiff Metropolitan University	FT	<b>C</b>

Please note: all courses may be subject to change and cancelled if deemed not viable to run.

## POTENTIAL CAREERS



Crime Scene Investigator



Fire Fighter



Police Officer



Police Sergeant



Personal Trainer

## DID YOU KNOW?

The average median income for a Senior Police Officer in Wales is

**£56,100** a year

(ESMI, 2023)



# ACCESS TO

# HIGHER EDUCATION

## YOUR PATHWAY TO UNIVERSITY

“

I chose to do the Access course because I want to apply for a Working with Children and Families degree. The fact that the course is free really did push me to take that leap and sign up. I would absolutely recommend Coleg Gwent to prospective students, I have had a really good time during this course and I have found the environment in general to be really supportive and helpful.

”



**SARA CROCKETT**  
ACCESS TO HE



**MEET SARA**

# OUR COURSES

	Level	Campus
Access to Higher Education - Humanities & Social Sciences	3	 
Access to Higher Education - Medical and Health Science	3	 
Access to Higher Education - Medicine	3	
Access to Higher Education - Nursing and Health Care Studies	3	   
Access to Higher Education - Policing & Public Services	3	

Please note: all courses may be subject to change and cancelled if deemed not viable to run.

## DON'T MEET THE ENTRY REQUIREMENTS FOR YOUR COURSE?

Our Access courses are a great stepping stone to your Higher Education chosen path, and you can specialise in a number of areas. Take a look at the individual course pages on our website for more information.

**A university degree is achievable even if you don't have any previous qualifications at level 3.**



## PLENTY OF CHOICE

You can choose from a range of pathways to get onto your chosen degree course and then, that dream job. You'll learn how to approach study and the different techniques that you'll need to succeed.



## FIND YOUR PAGE

Many people are nervous when they start an Access to Higher Education course, particularly if they haven't been in a classroom for some time. You won't be 'thrown in at the deep end' or tested but you can expect the course to be challenging. The whole purpose of an Access to Higher Education course is to help you succeed at university.



## BUILD YOUR SKILLS

We also offer a pre-Access course which focuses on academic skills to help you progress to an Access to Higher Education course.

# HOW TO APPLY

1

**COMPLETE AN  
APPLICATION  
FORM**



2

**ATTEND AN  
APPLICANT  
EVENT**



4

**ACCEPT  
YOUR OFFER**



3

**RECEIVE AN  
OFFER**



5

**APPLY FOR  
STUDENT FINANCE**



6

**ATTEND  
ENROLMENT**



7

**START YOUR HIGHER EDUCATION COURSE**





**Once you know the course you want to study, applying is easy.**

Our courses don't require application through UCAS\*, so you can apply directly on our website in just a few minutes.

**APPLY NOW**  
on our website



“Applying was easy! I was nervous because of my age and having worked full time since I left school, I thought that was my only option. The interview stage helped straight away as they answered all of my questions and put me at ease, so I was pleased to get onto the course.”



**TOM HATHWAY**  
**FOUNDATION DEGREE**  
**ILLUSTRATION**