



MAKE IT

»» AT COLEG GWENT



MAKE IT AS A GRADUATE

»» WITH COLEG GWENT

A university qualification is closer than you think, and it doesn't have to cost the earth. At Coleg Gwent, we have a growing number of higher education courses across all five of our campuses. So we're sure we'll have a course to suit you!

As one of the largest colleges in Wales, with a community of over 16,000 learners, we welcome students from all walks of life and ages!

We're dedicated to helping you achieve your goals, with strong industry links and partner universities - studying at Coleg Gwent provides you with the opportunity to build professional networks and expand your opportunities.

We know that higher education is a sound investment in your future. Whether you want to gain an edge in the fiercely competitive job market, enhance your promotion prospects or, even chart a completely new career direction, you can make it at Coleg Gwent!

GET IN TOUCH

If you have any questions, please get in touch with our friendly student recruitment team.

»» HELLO@COLEGGWENT.AC.UK

»» 01495 333777

(Coesawn alwadau yn Gymraeg).

CONTENTS



- 2** Welcome
- 4** Why Choose Coleg Gwent
- 6** Your Guide to Qualifications
- 8** Open Events
- 9** Our Campuses
- 10** Supporting You
- 12** A Focus on Finance
- 16** Business and Accountancy
- 18** Equine and Animal Health
- 20** Art & Design, Media and Photography
- 22** Computing and Digital Technology
- 24** Construction and the Built Environment
- 26** Education and Training
- 28** Engineering
- 30** Theatrical/Media Make Up and Complementary Therapies
- 32** Public Health and Care
- 34** Music, Drama and Dance
- 36** Science
- 38** Sport and Public Services
- 40** How to Apply



WHY CHOOSE US

»» GET THE UNIVERSITY EXPERIENCE



WE'RE LOCAL

Save money on travel and accommodation by studying closer to home. You'll also have more time to spend with friends, family or at work.



FLEXIBLE COURSES

Our wide range of subjects and study options mean you can study full time or part time, to fit in with work or other commitments.



MAKE IT A SUCCESS

Our professionally relevant higher education courses can give you a competitive edge, increased earning potential, greater opportunities and a rewarding career. Over 50% of our learners top up their degree at our partner universities.



IT COULD BE CHEAPER

Most of our higher education courses are cheaper than those at universities, so you could be saving thousands of pounds on tuition fees!

All of our courses are accredited by our partner universities which means you will have access to all the resources you need to succeed. If you successfully complete a course awarded by one of our partner universities, you'll receive a certificate awarded by the university and you'll be invited to a graduation ceremony.

»» MAKE IT IN PARTNERSHIP WITH



Cardiff
Metropolitan
University

Prifysgol
Metropolitan
Caerdydd





WORKPLACE EXPERIENCE

Our courses usually involve learning in the workplace as well as at college, so you'll get career-oriented skills and specific industry experience that employers look for, boosting your chances of finding your dream career.



FINANCIAL SUPPORT

There are a wide range of grants, bursaries and government loans available to support you while you study – so you can put your money worries behind you and focus on gaining your university level qualification.



BETTER TUITION

Our smaller class sizes mean you'll receive excellent personal support from lecturing staff and our dedicated support staff.



YOUR GUIDE TO QUALIFICATIONS

»» CHOOSING THE RIGHT COURSE FOR YOU

Not sure what qualification you're looking for, or what level to start at? Here's a handy guide to help you understand the level of study for our courses and to assist you in choosing the right qualification for you and your goals.

Level	Qualification		Progression Route	Job Level
7	Masters Degree/Doctorate		--	Chartered Professional
6	Honours/Bachelor's Degree		Master Degree or Doctorate	
5	Foundation Degree (FD) / HND	Professional Diploma/ Diploma in Higher Education	Degree Top-up to gain full degree	Management Professional
4	HNC	Professional Certificate / Certificate in Higher Education	HND or Professional Diploma/ Certificate	



FOUNDATION DEGREES

Foundation Degrees combine academic study with workplace/work-related learning, and are broadly equivalent to the first two years of a degree. They are designed with a particular area of work in mind, with the help of organisations from each sector, so you're getting the skills employers look for.



»» WHAT NEXT?

Once you've achieved a Foundation Degree, you can use your qualification and work experience to find employment, or you can make the decision to 'top-up' your qualification to a full Bachelor's Degree. This usually involves an extra year or two of study.

HIGHER NATIONAL CERTIFICATES (HNCs) AND HIGHER NATIONAL DIPLOMAS (HNDs)

HNCs and HNDs are work-related courses and are highly valued by employers both in the UK and overseas. While Bachelor's Degrees tend to focus on gaining knowledge, HNCs and HNDs are designed to give you the skills to put that knowledge to effective use in a particular vocation.

Higher National qualifications don't just qualify you for work. Some HNCs allow direct entry into the second year of a degree programme, and many HNDs allow direct entry to the third year of a degree. HNCs or HNDs can also give you access to a number of professional bodies. So whether you want to go straight into a job or continue your studies, getting a Higher National qualification can be a great place to start.

DEGREE 'TOP-UPS'

A Top-up degree is the equivalent to the final year of undergraduate study, giving you a degree level qualification. As the name suggests, these courses give you the option to 'top-up' an existing qualification, whether that's a Foundation Degree or another relevant qualification, like a HND. Every course has its own entry requirements, so check the course you're interested in to find out exactly what you'll need to be able to apply. In addition, make sure you check your eligibility for continued student finance.



PROFESSIONAL QUALIFICATIONS

Professional qualifications focus on improving your ability to succeed in a particular occupation, which is ideal if you have a clear career objective and want to gain valuable on-the-job experience. Many careers demand that you have a professional qualification, but in other cases, professional qualifications are not essential; they allow you to achieve greater competence in your field and help you climb the career ladder.

OPEN EVENTS

» MAKE IT YOUR NEXT STEP

Our open events cover everything you need to know about college life, support, finance, our courses and much more. Everyone is welcome and we encourage you to register ahead via our website for a speedy check-in, but we also welcome walk ins. Each of our campuses offer different subjects, so depending on which subjects you want to discuss at an open event, please visit the relevant campus.

We also host virtual open events throughout the year, so keep a look out on our website for updates.



AT OUR OPEN EVENTS YOU CAN:



LEARN MORE ABOUT A COURSE OR SUBJECT AREA FROM OUR EXPERT TUTORS



FIND OUT ABOUT POTENTIAL CAREERS



TAKE A LOOK AROUND THE CAMPUS, FACILITIES AND CLASSROOMS



LEARN ABOUT THE APPLICATION PROCESS AND APPLY THERE AND THEN



GET INFORMATION ABOUT FINANCIAL SUPPORT



FIND OUT ABOUT OUR SUPPORT SERVICES

REGISTER NOW



To register and view an up-to-date list of our upcoming open events, please visit our website:

» [WWW.COLEGGWENT.AC.UK/OPEN](http://www.coleggwent.ac.uk/open)

OUR CAMPUSES

WANT TO LEARN MORE ABOUT OUR CAMPUSES?

Did you know you can take a tour of our campuses at any time, right from the comfort of your own home? Have a look at our 360 campus tours on our virtual event platform.

>> [VIRTUAL.COLEGGWENT.AC.UK](https://virtual.coleggwent.ac.uk)



CROSSKEYS CAMPUS

Our largest campus, host to impressive photography studios and theatre facilities for performing arts, as well as a library equipped with a Mac suite, books with access to online journals – and much more!



BLAENAU GWENT LEARNING ZONE

Blaenau Gwent's cutting-edge Learning Zone has state-of-the-art facilities including purpose-built construction workshops, recording studios, Mac computer suites, a performance hall, a library and our very own racing car and aeroplane!



CITY OF NEWPORT CAMPUS

Our City of Newport campus hosts fantastic facilities - including well-equipped engineering and construction workshops, science laboratories, as well as an innovative digital technology suite.



TORFAEN LEARNING ZONE

Offering a broad range of subjects, Torfaen Learning Zone sits in the centre of Cwmbran with on-site parking and is easily accessible by public transport.



USK CAMPUS

Usk campus is home to our agricultural, sport, leisure and public services courses. Surrounded by beautiful countryside and set on the edge of the historic Usk town, it's the campus to choose if you have a passion for nature and the outdoors.

SUPPORTING YOU

PERSONAL TUTORS

As a higher education learner, you'll receive individual support from a personal tutor from the moment you join Coleg Gwent. Your tutor will help you settle into college, guide you through your course, offer support through any difficult times and celebrate your successes.

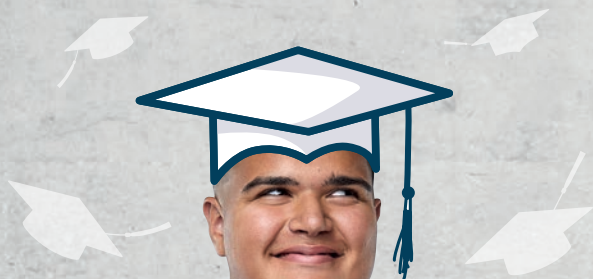


HIGHER EDUCATION HUBS

At selected campuses you will find a dedicated space solely for our higher education learners with computers, breakout areas and sofas for quiet study or unwinding. Why not take a tour of them at one of our open events?

HIGHER EDUCATION PROGRESSION OFFICERS

On each campus we have a Higher Education Progression Officer who will support you with academic and pastoral guidance throughout your programme of study. Higher Education Progression Officers are dedicated to supporting you through any difficulty, which includes referral to our relevant specialist teams.





ADDITIONAL LEARNING NEEDS (ALN)

Upon confirmation from Student Finance Wales/England, if you have a registered learning difficulty and/or a disability, we can provide lots of support.

This could include:

- **Financial advice**
- **Dealing with stress and anxiety**
- **In-class support from an Additional Support Assistant**
- **Extra sessions for help with assignments and coursework**
- **Help from a Communication Support Worker (for deaf students)**
- **Dyslexia support**
- **Use of accessibility software including initial training**
- **Exam access arrangements**

If you need support you can talk to your Personal Tutor, contact the campus Additional Learning Needs Co-ordinator (ALNCo) or a Higher Education Progression Officer.



WELSH LANGUAGE AND BILINGUAL STUDY SUPPORT

We have support at all of our campuses if you'd like to learn in Welsh or bilingually. The 'HWB Cymraeg' offers information about the benefits of studying bilingually, one-to-one support to complete work in Welsh or bilingually, guidance on using apps to help with bilingual study and preparing for assessments through the medium of Welsh.



WE HEAR YOU

At Coleg Gwent, we take your views and experiences on board and use these so that we can constantly improve your learner experience. There are many ways you can give us your feedback including; class representative voice, learner forums, college committees and groups, as well as learner feedback questionnaires.

A FOCUS ON FINANCE

A higher education course is an investment in your future; whilst there are costs associated with learning, whether it's time you invest or your tuition fees, you may be eligible for financial support which means it could cost less than you think.

HOW MUCH DOES IT COST?

› Courses accredited by the University of South Wales, Cardiff Metropolitan University and Aberystwyth University

Foundation Degrees, HNCs and HNDs accredited by these universities are £7,500 per year*. All one year BSc and BA top up courses are £9,000.

› Courses accredited by the University of Worcester

Foundation Degrees accredited by this university are £9,250 per year.

› PcET (Post Compulsory Education and Training)

For 2022-23 the fees per 20 Credits are £900 – you would usually study 60 credits per academic year.

› Top-up Degrees by the University of South Wales and Cardiff Metropolitan University

Top-up Degrees accredited by this university are £9,000 per year.

› Higher National qualifications by Pearson

Higher National qualifications accredited by Pearson have variable fees so please refer to the individual course information on our website.

*Please note that these costs are correct as of June 2022 and may be subject to change.





ADDITIONAL COSTS

Your course may have additional costs which can be mandatory or optional. These costs are additional to tuition fees and need to be paid for by you to fully participate and complete your programme of study. This covers such things as equipment, trips, placements and DBS checks. Each course has different additional costs which you'll find in the course information on our website.

» WWW.COLEGGWENT.AC.UK/HE

» **MAKE IT
AFFORDABLE**

A FOCUS ON FINANCE

When studying higher education, there will be two main costs – tuition fees and living costs. However, there will be financial support available through loans (which you have to pay back) and grants/bursaries (which you don't have to pay back).

Information for full time Higher Education students

Students studying their first HE course, who normally live in Wales, can get a Tuition Fee Loan up to a maximum of £9,250. The Tuition Fee Loan isn't based on your household income. In addition to this loan, you can get maintenance support (help with living costs). Eligible students living away from home (outside London) can get £10,710 per year, made up of a mix of grant and loan. The amount of grant you'll get depends on your household income.

N.B If you've studied a HE course before, it's important that you understand it might affect your eligibility for support. Please refer to www.studentfinancewales.co.uk and the section on Previous Study Rules.

Information for part time Higher Education students

A student studying in Wales can apply for a non-means tested fee loan of up to £2,625 to cover their annual fees. Students need to be studying at a minimum 25% intensity to be eligible e.g. a full time student completes 120 credits in one year, therefore a part time student would need to complete a minimum of 30 credits per year. Students are able to apply for annual living costs support for up to a maximum of £5,929. The amount of grant and loan you are awarded will be dependent on the number of hours you will be studying and your household income.



You will need to apply for funding before starting your course; the sooner you do this the better, and do remember, you will have to reapply for funding every academic year.

Full details of all financial support and how to apply can be found on the Student Finance Wales website:

» WWW.STUDENTFINANCEWALES.CO.UK

Student Finance England website:

» WWW.GOV.UK/STUDENT-FINANCE



BURSARIES, GRANTS AND SUBSIDIES

You may be eligible for bursaries, grants or subsidies to support you while you study. The eligibility criteria is dependent on your circumstances. To learn more about the financial support on offer – please visit our website:

» WWW.COLEGGWENT.AC.UK/HE

DISABLED STUDENTS' ALLOWANCE (DSA'S)

If you have a disability, long-term health condition, mental health condition or specific learning difficulty you may be eligible for financial support. Disabled Students' Allowances (DSAs) are grants to help pay towards these essential extra costs you may have as a direct result of your disability.

OTHER FINANCE SUPPORT OPTIONS:

You may get extra funding if you have adults or children who are financially dependent on you, which can include:

- » **Adult Dependent's Grant (ADG)**
- » **Childcare Grant (CCG)**
- » **Parents' Learning Allowance (PLA)**

You can find a plethora of financial support options on our website

» WWW.COLEGGWENT.AC.UK/HE



BUSINESS AND ACCOUNTANCY

In a rapidly changing business environment, employers are looking for people who have their finger on the pulse and can easily find solutions to an array of problems.

Whether you're looking to study business or financial and professional services; our teaching is relevant, applied and connected with industry standards, so you'll get the skills employers look for in applicants. Our strong emphasis on work-related experience means you'll get hands-on skills you can use in the workplace.



“

I would recommend Coleg Gwent because the class sizes are small so you get more of the lecturers' time and attention. The course has given me the encouragement and bravery to further explore my knowledge in business and one day, I want to start my own business.

TARYN MASON

>> FOUNDATION DEGREE BUSINESS



DID YOU KNOW?

Business and financial project management professionals earn on average

£51,480

(EMSI, 2021)



Course	Award	Campus	Validating institution	Full time/part time
Business	HNC	B	Pearson	PT
Business Management	HND	T	USW	FT
Accounting	Professional Diploma	N	AAT	PT

»» WHAT NEXT?



If you choose to study a Foundation Degree, you may have the option to study for another year full or part time at your chosen university to top up to a full Bachelor's Degree. Otherwise, you can go straight into employment. Depending on your course, your career options include; management, marketing, finance, trading, business and insurance.

Please note: all courses may be subject to change and cancelled if deemed not viable to run.

EQUINE AND ANIMAL HEALTH

If you have a passion for animals, why not make a career out of it? Take the reins and study one of our equine or animal health courses at our beautiful rural-based campus in Usk.

All employers look for experience and you'll get plenty of it at our Usk campus. We have well established courses with the University of South Wales and Aberystwyth University so no matter what course you choose, you'll have access to all the facilities you'd expect to find in this industry.

Animal and veterinary students will work in the small animal care centre which is home to a whole host of animals, from rabbits and guinea pigs to more exotic species including reptiles and donkeys, as well as our Blue Cross cat rehoming centre.

Equestrian students will have full use of our indoor and outdoor schools and livery facilities so you'll learn how to care for and manage horses, examine their behaviour and learn about the industry on campus.



Course	Award	Campus	Validating institution	Full time /part time
Equine Studies	BSc Top Up	U	AU	FT
Equine Studies	FD	U	AU	FT
Animal Health & Welfare	BSc Top Up	U	USW	FT
Animal Health & Welfare	FD	U	USW	FT
Veterinary Nursing	BSc Top Up	U	USW	FT
Veterinary Nursing	FD	U	USW	FT

Please note: all courses may be subject to change and cancelled if deemed not viable to run.

DID YOU KNOW?

Animal Care Workers, Veterinarians and Veterinary Nurses are the top three fastest growing jobs in the Food & Farming sector.

(Careers Wales)

“

At Coleg Gwent, they have fantastic lecturers, fantastic facilities, as well as an indoor arena, outdoor arena, and some incredible horses! It's local, so it's given me the opportunity to study a really good qualification basically on my doorstep. The class sizes are much smaller than what you would have at a normal university, so it's on a much more personal level with your lecturers. I would definitely recommend a Higher Education course at Coleg Gwent.

JORDAN WHITTAKER

>> FOUNDATION DEGREE EQUINE STUDIES

>> WHAT NEXT?

You may have the option to study for another year full or part time with your chosen university to top up to a full Bachelor's Degree, or you could take your Foundation Degree as a standalone qualification and get work in areas such as veterinary practice, animal behaviour and psychology.



ART & DESIGN, MEDIA AND PHOTOGRAPHY

The creative industries are growing faster than any other area of the UK economy - great news for talented graduates with a passion for art, design, media and photography.

Doing a creative job for a living is an enviable position to be in. It's quite rare to be able to do something you're passionate about for your day job, so if you manage to build a career in the creative industries, it's likely you'll enjoy a lot of job satisfaction. Our spacious art, design, fashion, media and photography studios are the ideal place to express yourself, experiment with a range of techniques and perfect your specialism.

DID YOU KNOW?

The annual turnover for creative industries in Wales

£2.2BN

(Creative Wales, 2021)

“

I decided to study Games Art & Design at Coleg Gwent because it's much cheaper than other universities. It's a really good course - the modules allow you to be really creative. The tutors are great and create a nice atmosphere in the classroom.

THOMAS MORTON

>> FOUNDATION DEGREE GAMES ART & DESIGN





»» WHAT NEXT?

Our creative courses can equip you for a whole range of careers and opportunities in the ever competitive creative industries. Options include media, photography, creative design, fashion, gaming and TV and film.

Course	Award	Campus	Validating institution	Full time/ part time
Photography	BA Top-up	C	CMU	FT
Photography	FD	C	CMU	FT
Games Art & Design	FD	C	USW	FT
Performing Arts	FD	C	USW	FT
Illustration	FD	C	USW	FT
Illustration*	BA Top-up	C	USW	FT
Media Production	FD	C	USW	FT
Artist Designer Makers*	FD	C	CMU	FT

*This course is subject to validation.

Please note: all courses may be subject to change and cancelled if deemed not viable to run.

COMPUTING AND DIGITAL TECHNOLOGY

We're surrounded by technology in the modern world so strong digital and computing skills are in high demand.

By studying a higher education computing course, you can equip yourself with the skills you need for a rewarding career, as well as having access to state of the art equipment on which to learn.

Digital Technology is arguably one of the fastest growing and evolving sectors; there are more jobs than skilled employees so employers are always on the lookout for potential recruits with these skills.

DID YOU KNOW?

The average salary in this sector is

£50k

(EMSI, 2021)





“

Coleg Gwent offers a lot of great opportunities; including great work placement opportunities. The class sizes are smaller than university and of course, you get to know the tutors well. After finishing my course, I'd like to progress to then do my Bachelor's top-up degree and further from there, possibly find a job within the IT sector, such as system support or networking.

NICHOLAS MALOLEPSZY
 >> HND COMPUTING



>> WHAT NEXT?

If you choose to study a Foundation Degree you may have the option to study for another year full or part time at your chosen university to top up to a full Bachelor's Degree, otherwise you can go straight into employment. Career options, depending on your course, could include IT director, software developer, programming, system support and much more!

Course	Award	Campus	Validating institution	Full time /part time
Digital Technologies	HNC	B	Pearson	PT
Computing	HND	N	USW	FT

Please note: all courses may be subject to change and cancelled if deemed not viable to run.

CONSTRUCTION & THE BUILT ENVIRONMENT

Design and build your own future in the world of construction. A career in construction is your opportunity to leave a tangible imprint on our neighbourhoods of the future.

Our higher level qualifications will give you the skills, knowledge and industry experience employers look for.

If you want to play a part in changing skylines, building beautiful bridges or influencing architecture, you'll learn all the latest techniques and principles to equip you for employment on our HNC in Construction and the Built Environment – the sky really is the limit.

Course	Award	Campus	Validating institution	Full time /part time
Construction and the Built Environment	HNC	N	Pearson	FT
Construction and the Built Environment	HNC	N	Pearson	PT
Construction and the Built Environment	HND	N	Pearson	FT
Construction and the Built Environment	HND	N	Pearson	PT

**Experienced Construction Site
Managers can earn up to**

£47,500

(EMSI, 2022)



Please note: all courses may be subject to change and cancelled if deemed not viable to run.

DID YOU KNOW?

Over

2500

**jobs in construction
were available in
Wales in 2021**

(EMSI, 2022)

»» WHAT NEXT?

You may have the option to study for another year full or part time at your chosen university to top up to a full Bachelor's Degree, or you could take your Foundation Degree as a standalone qualification and get work in areas such as civil engineering, project management, infrastructure, architecture or electrical installation.

“

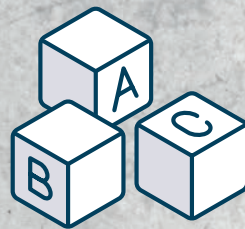
I started at level 3 then easily progressed onto the HNC and HND. The courses give you a better understanding of all sides of construction and Coleg Gwent has given me great employer links and experience to make me more employable. The class sizes are smaller and it's more one-to-one tuition which really helped!

BEN ROBERTS

»» **HND CONSTRUCTION
AND THE BUILT
ENVIRONMENT**



EDUCATION AND TRAINING



Do you want to make a difference to someone's life by teaching?

A teaching career can be exciting and rewarding, as well as offering you variety and the chance to improve the future prospects of others. Our courses qualify you to teach those over 16 years of age, so you'll need to be able to relate well to students of all ages and abilities as the profile of potential students is extremely broad. You could be teaching academic courses to school leavers who want to go onto university, adults who want to retrain and change career or people returning to the classroom after years out of education.

»» WHAT NEXT?

Our teaching courses qualify you to teach in post-16 education which could include colleges, sixth forms, adult and community education, work-based training providers and offender learning settings. They do not give you qualified teacher status (QTS) which is required for primary and secondary teaching.

DID YOU KNOW?

The average salary for primary and nursery education teaching professionals is

£40,560

(EMSI, 2021)



Please note: all courses may be subject to change and cancelled if deemed not viable to run.

Course	Award	Campus	Validating institution	Full time /part time
Post compulsory Education and Training (PcET)	Professional Certificate	B	USW	PT
Post compulsory Education & Training (PcET)	Professional Graduate Certificate (PGCE)	B	USW	PT

“

I would recommend Coleg Gwent because the people you meet are fantastic. My personal tutor was great, he was really supportive, professional and I was comfortable talking to him about anything. During placement, you receive well structured and effective feedback that you're able to apply through your teaching, helping you understand different learning needs.

MACEY JONES

» PCET

ENGINEERING

Engineer your future! Engineers are instrumental to everyday life, from the phones we use, the deodorant we wear, to the planes we travel in. The sector is very diverse, highly skilled and well paid. Demand for engineers is high, so there are always jobs available.

Mechanical engineers design and maintain components and systems using their knowledge of physics and maths, getting to work with advanced

materials such as carbon fibre and composite materials.

From small component parts to entire electrical networks or grids; electricity is needed for business, communication and entertainment. If you're attentive to detail and clued up on the principles, electrical engineering is for you.

“

My goal is to become an engineer and studying at Coleg Gwent has provided me with the academic qualifications I need. The course is flexible and all of what you learn is relevant and transferrable to working environments. The tutors are great, I've got a relationship with them where I feel I can always ask for help.

HYWEL CRUICKSHANK

>> HND ENGINEERING



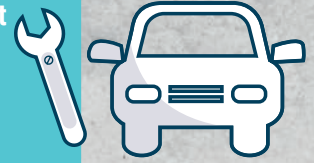
Please note: all courses may be subject to change and cancelled if deemed not viable to run.

DID YOU KNOW?

Demand for Mechanical Engineers is high in Wales with almost

3,000 PEOPLE

working in this role – that's 14% higher than the national average.



>> WHAT NEXT?

Depending on what route you take, you could move on to employment in aeronautical, automotive or composites and related fields of engineering. If you're studying a HNC, you could also progress to further study with either the HND or engineering degrees.

Electrical Engineers
in Wales earn an
average of a year

£44,700

(EMS, 2022)

Course	Award	Campus	Validating institution	Full time /part time
Mechanical Engineering	HNC	C	Pearson	PT
Mechanical Engineering	HND	C	USW	PT
Electrical & Electronic Engineering	HNC	C	Pearson	PT
Electrical & Electronic Engineering	HND	C	USW	PT
Construction & Built Environment	HNC	N	Pearson	PT
Construction & Built Environment	HND	N	Pearson	PT
Civil Engineering	HNC	N	Pearson	PT
Civil Engineering	HND	N	Pearson	PT
Engineering (Motor Sport)	HNC	B	Pearson	FT

THEATRICAL/MEDIA MAKE UP AND COMPLEMENTARY THERAPIES

Our beauty and therapies courses can help you embark on your dream career!

Our higher education theatrical make up courses will let your creativity shine and will give you all the skills you need for an exciting role in the make up industry for film, theatre and television.

Our complementary therapies courses will see you complete your studies as a highly skilled professionally accredited therapist, ready for the world of work.

DID YOU KNOW?

As a senior special effects make up artist, you could earn up to

£62,196

(Salary Expert UK, 2022)



Course	Award	Campus	Validating institution	Full time/part time
Complementary Healthcare (with Practitioner status)	HND	C	CMU	FT
Specialist Make Up	HND	C	Pearson	FT



“

I like everything about my course. I like the campus and I love the course modules because you can personalise them. I like the tutors because they're so supportive, they give academic help and can also point you in the right direction if you need other support such as mental health wellbeing.

EMILY WATKINS

» THEATRICAL AND MEDIA MAKE UP

» WHAT NEXT?

Following completion of a HND course, you can further progress and complete an undergraduate degree in the field of complementary therapies or specialist make up. Alternatively, if you wish to go straight into work with your HND, you'll find that you can apply for more senior or more specialist roles within the sector.

Please note: all courses may be subject to change and cancelled if deemed not viable to run.

PUBLIC HEALTH AND CARE

Take care of your future. The care sector offers a diverse range of career opportunities that can be hugely rewarding and make a positive impact on the lives of others.

Our range of health care courses can prepare you for a successful career whether you want to work directly with patients, head up a team to provide top quality care or influence policy at a national or regional level.

If you'd prefer a career in childcare, our childhood studies course will equip you with the skills, knowledge and hands-on experience you'll need in a challenging yet extremely varied and rewarding sector. With physical and mental health being such a debated and prominent subject in today's society, our specialist Foundation Degrees will prepare you with the understanding to join the conversation.

Course	Award	Campus	Validating institution	Full time/ part time
Childhood Studies	FD	B	USW	FT
Childhood Studies	FD	C	USW	FT
Community Health and Well Being	FD	B	USW	FT
Community Health and Well Being	FD	T	USW	FT
Youth & Social Care*	FD	C	USW	FT
Substance Misuse*	Cert HE	C	USW	FT

DID YOU KNOW?

Experienced professionals in this sector can earn up to

£39K

(EMSİ, 2022)



*This course is subject to validation.

Please note: all courses may be subject to change and cancelled if deemed not viable to run.

»» WHAT NEXT?

You may have the option to study for another year full or part time at your chosen university to top up to a full Bachelor's Degree, or you could take your Foundation Degree as a standalone qualification and get work in areas such as youth work, social work, hospitals, childcare or therapy.

“

I would recommend higher education at Coleg Gwent because the course has helped me grow so much academically and personally as a person. This would not have happened without the amazing support from my tutors and other students. I feel it has made me so much more confident in all aspects of my life.

CARLY STEPHENS

»» **FOUNDATION DEGREE
COMMUNITY HEALTH AND WELLBEING**



MUSIC, DRAMA AND DANCE

From the bright lights to the spotlight...

This industry is all about creative buzz, energy and drive. If you feel at home on the main stage, in the recording studio or on the dance floor, then this is the industry for you.

Wales is making a name for itself in the creative industries, one of the fastest growing sectors in the country, by producing high profile TV shows and being home to well-known musicians and singers. Why not add to the star-studded line-up by studying with us today?

“

Studying at Coleg Gwent is great because it's local and the equipment they have here gives you a great insight into the profession. You get to meet with professionals in the industry and get their feedback too. The specialist project is the most fulfilling, you have total control over the outcome, content and direction of the project.

JOSEPH FURLEY

»» FOUNDATION DEGREE PERFORMING ARTS

Course	Award	Campus	Validating institution	Full time/ part time
Creative Industries: Popular Music Technology (Music Performance pathway)	FD	C	USW	FT
Creative Industries: Popular Music Technology (Music Production pathway)	FD	C	USW	FT
Performing Arts	FD	C	USW	FT

DID YOU KNOW?

Actors, entertainers and presenters typically earn

£58,240

in Wales

(Creative Wales, 2021)

»» WHAT NEXT?

You may have the option to study for another year full or part time at your chosen university to top up to a full Bachelor's Degree, or you could take your Foundation Degree as a standalone qualification and get work in areas such as performing, TV, music production, singing and much more!



Please note: all courses may be subject to change and cancelled if deemed not viable to run.

SCIENCE

Find the formula for your success.

Science surrounds us in everyday life from the motion of cars, the medicines we take to speaking to Siri on our phones. Technological and scientific advances are constantly changing the world we live in; you could work in artificial intelligence and even with robots!

Studying at Coleg Gwent means you'll get hands-on experience in our purpose-built science laboratories, all with industry standard equipment. You'll also be taught by our expert lecturers, with a wealth of experience and be supported by technicians with a vast amount of industrial and forensic experience.

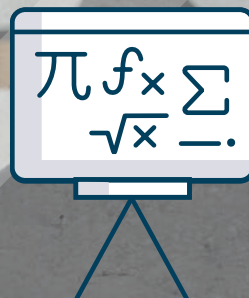


NEW FOR 2023!

Course	Award	Campus	Validating institution	Full time/part time
Biomedical Science*	HND	T	CMU	FT

DID YOU KNOW?

Many technology companies who rely on science professionals are global. So, a career in this sector could see you travelling the globe, solving international challenges or working in forensic laboratories in the UK or abroad.



*This course is subject to validation.

Please note: all courses may be subject to change and cancelled if deemed not viable to run.

» WHAT NEXT?

Our science courses can lead to many career options including forensic science, forensic computing, a lab technician or research.

“

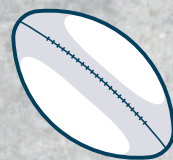
I would recommend a science course at Coleg Gwent because it isn't too overwhelming, there's a lot of free time for independent learning and everything you need is at the College. I enjoy it as a mature student, because the learners in my class are older - we're all a similar age and here for a reason.

ZUZANNA KALEK

» ACCESS TO BIOSCIENCES



SPORT AND PUBLIC SERVICES



Follow in the footsteps of your sporting heroes or keep our communities safe with a job in public and emergency services. From grassroots sport in the community to elite level competition, coaching is vital to the development of fitness, strategy and the psychology of sport. You'll do a series of work placements to give you practical experience in a sporting role; you'll gain an evidence-based approach to coaching, as well as developing your technical understanding.

Public and emergency services is at the very heart of our community and those who pursue a career within one of the uniformed or non-uniformed services will be fulfilling a vital role in society, making a real difference to the lives of others. You'll cover all aspects of public and emergency services from people management and motivation to the impact of legislation on society.

“

I would recommend Coleg Gwent because the lecturers are great, they all have experience in public services and specialise in different areas so you get a broad range of knowledge. They also have smaller class sizes so you get more one to one tuition than you would at university.

HUW LLOYD

» HND PUBLIC AND
EMERGENCY SERVICES



Course	Award	Campus	Validating institution	Full time/part time
Exercise and Wellness Management	FD	B	UW	FT/PT
Sports Coaching and Development	FD	C	USW	FT
Sports Conditioning, Rehabilitation and Massage (SCRaM)	FD	C	CMU	FT
HND Public and Emergency Services	HND	C	USW	FT
HND Public and Emergency Services	HND	T	USW	FT

DID YOU KNOW?

The average salary of an experienced police officer is

£43,000

(Careers Wales, 2022)



»» WHAT NEXT?

If you're studying a Foundation Degree, you may have the option to study for another year full or part time at your chosen university to top up to a full Bachelor's Degree, otherwise you can go straight into employment. If you're studying a HND, this will allow you to apply for a more senior position or specialist role. Career options, depending on your course, could include a fire fighter, police officer, crime scene investigator, personal trainer, wellness coach and more!

Please note: all courses may be subject to change and cancelled if deemed not viable to run.

HOW TO APPLY



**COMPLETE AN
APPLICATION FORM**



**RECEIVE
AN OFFER**



**ACCEPT
YOUR OFFER**



ATTEND ENROLMENT



START COLLEGE!

HOW TO APPLY

Once you know the course you want to study, applying is easy! The majority of our courses don't require application through UCAS*, so you can apply directly on our website in just a few minutes.

**APPLY
NOW**

www.coleggwent.ac.uk



“

Applying was easy! I was nervous because of my age and having worked full time since I left school, I thought that was my only option. The interview stage helped straight away as they answered all of my questions and put me at ease, so I was pleased to get onto the course.

TOM HATHWAY

» **FOUNDATION DEGREE
ILLUSTRATION**

*Courses accredited by the University of Worcester require application through UCAS.