



HIGHER
EDUCATION GUIDE
2020 - 22

MADE FOR GRADUATES

A **UNIVERSITY LEVEL** QUALIFICATION
IS CLOSER THAN YOU THINK



MADE FOR EVERYONE

So, what is studying higher education like at college?

Read through this guide to hear what our current students say. However, you don't have to just take their word for it, come and experience it for yourself at one of our open events. They're held throughout the year, with specific information events dedicated to just higher education.



At open events and HE
information events you can:



Talk to tutors and
other HE learners



Get details of financial
support available



Take a tour of the
campus and facilities

HE Information Events

Wednesday 9 October 2019
13:00 - 16:00

Thursday 9 January 2020
13:00 - 16:00

Tuesday 26 November 2019
13:00 - 16:00

Tuesday 25 February 2020
13:00 - 16:00



Book your place online and start your success story
with us today www.coleggwent.ac.uk/open

Apply online now at www.coleggwent.ac.uk/he



CONTENTS

04

Made for choice

05

5 reasons to study
at Coleg Gwent

06

Made for graduates

08

Supporting you

10

A focus on finance

14

How to apply for HE

15

Course information key
and our partners

16

Equine and Animal Health

18

Construction & the Built
Environment

20

Business, Management &
Tourism

22

Creative Industries

24

Public Care & Health

26

Humanities & Education

28

Science, Engineering &
Technology

30

Sport & Public Services

32

Our Campuses

Generic Open Events

Our generic open events cover full and part time courses but you can still get information on university qualifications at these events (especially if you can't attend one of our HE information events as seen on the page to the left).

Thursday 7 November 2019
17:00 - 19:30

Wednesday 29 April 2020
17:00 - 19:30

Wednesday 5 February 2020
17:00 - 19:30

Tuesday 23 June 2020
17:00 - 19:30

Saturday 21 March 2020
10:00 - 13:00

MADE FOR CHOICE

Coleg Gwent is a collaborative partner of the University of South Wales, Aberystwyth University, the University of Worcester, Cardiff Metropolitan University and Pearson.



Cardiff
Metropolitan
University

Prifysgol
Metropolitan
Caerdydd



Apply online now at www.coleggwent.ac.uk/he



5 REASONS TO STUDY AT COLEG GWENT

Lots of choice!

With more than 40 courses in Business, Care and Engineering plus many more, you'll easily find the course that's made for you. You can study full or part time to fit in with work or other commitments.



Get the uni experience

We have strong partnerships with the University of South Wales, Aberystwyth University, the University of Worcester, Cardiff Metropolitan University and Pearson. This means, if you successfully complete a course awarded by one of our partner universities, you'll receive a certificate awarded by that university and you will be invited to their graduation ceremony.

We're local

We're local so you'll save money and time on travel as well as accommodation as you won't need to move away from home. The time saved can be spent with family, friends or at work.



Workplace experience

Our courses usually require you to gain workplace experience as well as college study. So you'll get industry specific skills and first-hand experience that employers look for, giving you that competitive edge over others, boosting your chances of finding your dream career.



Made for Success

More than half of our HE students top up their degree at our partner universities!

MADE FOR GRADUATES

Your
guide to
qualifications



Making sure you're on the right course is important to us as it can influence your next step and your longer-term future. Here's a handy guide to the various qualifications we have on offer:

Foundation Degrees

Foundation Degrees combine academic study with workplace/work-related learning. They are broadly equivalent to the first two years of a degree. They are designed with a particular area of work in mind, with the help of organisations from that sector, so you're getting the skills that employers look for.

Once you've achieved a Foundation Degree, you can use your qualification and work experience to find employment, or you can make the decision to 'top-up' your qualification to a full Bachelor's Degree. This usually involves an extra year or two of study.



Apply online now at www.coleggwent.ac.uk/he





Higher National Certificates (HNCs) and Higher National Diplomas (HNDs)

HNCs and HNDs are work-related courses and are highly valued by employers both in the UK and overseas. While Bachelor's Degrees tend to focus on gaining knowledge, HNCs and HNDs are designed to give you the skills to put that knowledge to effective use in a particular vocation.

Higher National qualifications don't just qualify you for work. Some HNCs allow direct entry into the second year of a degree programme, and many HNDs allow direct entry to the third year of a degree. HNCs or HNDs can also give you access to a number of professional bodies. So whether you want to go straight into a job or continue your studies, getting a Higher National qualification can be a great place to start.



Professional qualifications

Professional qualifications focus on improving your ability to succeed in a particular occupation, which is ideal if you have a clear career objective and want to gain valuable on-the-job experience. Many careers demand that you have a professional qualification, but in other cases, professional qualifications are not essential; they allow you to achieve greater competence in your field and help you climb the career ladder.

Degree 'Top-ups'

A Top-up degree is the equivalent to the final year of undergraduate study, giving you a degree level qualification. As the name suggests, these courses give you the option to 'top-up' an existing qualification, whether that's a Foundation Degree or another relevant qualification, like a HND.

Every course has its own entry requirements, so check the course you're interested in to find out exactly what you'll need to be able to apply. In addition, make sure you check your eligibility for continued student finance.



SUPPORTING YOU

Personal Tutors

As a full time student you will have your very own Personal Tutor who will meet with you to review your academic progress. They'll provide support, offer guidance and encouragement to support you to successfully complete all aspects of your course.

The Learning Centre

As well as books, journals, eBooks and DVDs you can use PCs or connect your own device to our free Wi-Fi in the Learning Centre. Staff are on hand to help you find resources and access other services such as photocopying, laminating and binding.

HE Hubs

A dedicated space solely for our HE learners. You'll find computers, break-out areas and sofas for quiet study or unwinding. Our hubs are available at selected campuses. Why not take a tour of them at one of our open events?

Support for additional learning needs

Upon confirmation from Student Finance Wales/England, if you have a registered learning difficulty and/or a disability, we can provide lots of support. This could include:

- In-class support from an Additional Support Assistant
- Extra sessions for help with assignments and coursework
- Help from a Communication Support Worker (for deaf students)
- Dyslexia support
- Use of the Green Room
- ARROW sessions to help you improve your reading and spelling skills
- Use of accessibility software including initial training
- Exam access arrangements

If you need support you can talk to your Personal Tutor or contact the campus Additional Learning Needs Co-ordinator (ALNCo).

Apply online now at www.coleggwent.ac.uk/he



Wellbeing support

Your safety and welfare is our priority. We will ensure you're safe in college and on work placements, and we'll provide support with personal difficulties. You can use our confidential counselling and chaplaincy services and we can also put you in touch with external agencies which may help you.

If you'd like to know more about the extensive support we offer contact Learner Services at your campus or go to www.coleggwent.ac.uk/support.



Financial support

More info on the grants and bursaries available to you are on the next page.



A FOCUS ON FINANCE

A higher education course is an investment in your future. And whilst there are costs associated with learning, whether it's time you invest or your tuition fees, you may be eligible for financial support which means it could cost less than you think.

The Welsh Government is still to confirm arrangements for 2020/21 onwards, which means that for students starting in September 2019 onwards, tuition fees may rise for any successive years of study, mapped according to any inflation linked maximum tuition fees permitted by the Welsh Government.

We will inform all applicants and students of the fee levels for 2020/21 and any inflation linked increases as soon as confirmation is received from Welsh Government. We will publish any updates on the college website.

Courses accredited by the University of South Wales, Cardiff Metropolitan University and Aberystwyth University:

Foundation Degrees, HNCs and HNDs accredited by these universities are £7,500 per year*.

Courses accredited by the University of Worcester:

Foundation Degrees accredited by this university are £9,250 per year*

PcET (Post-compulsory Education and Training):

For 2019/20 tuition fees for PcET courses are £875 per 20 credit module* - you would usually study 60 credits in a year.

Top-up degrees by the University of South Wales:

Top-up Degrees accredited by this university are £9,000 per year*

Higher National qualifications by Pearson:

Higher National qualifications accredited by Pearson have variable fees so please refer to the individual course information on our website.

Apply online now at www.coleggwent.ac.uk/he





Additional costs

Your course may have additional costs which can be mandatory or optional. These costs are additional to tuition fees and need to be paid for by you to fully participate and complete your programme of study. This covers such things as equipment, trips, placements and DBS checks. Each course has different additional costs which you'll find in the course information on our website.

*Figures correct at time of print and may be subject to change. Please check the college website and Student Finance Wales/England website for the latest information before you apply.

A FOCUS ON FINANCE



When studying higher education, there will be two main costs – tuition fees and living costs. However, there will be financial support available through loans (which you have to pay back) and grants/bursaries (which you don't have to pay back).

Information for full time*

HE students:

Students studying their first HE course, who normally live in Wales, can get a Tuition Fee Loan up to a maximum of £9,250. The Tuition Fee Loan isn't based on your household income. In addition to this loan, you can get maintenance support (help with living costs). Eligible students living away from home (outside London) can get £9,000 per year, made up of a mix of grant and loan. The amount of grant you'll get depends on your household income.

N.B If you've studied a HE course before, it's important that you understand it might affect your eligibility for support. Please refer to www.studentfinancewales.co.uk and the section on Previous Study Rules.

Information for part time*

HE students:

A student studying in Wales can apply for a non-means tested fee loan of up to £2,625 to cover their annual fees. Students need to be studying at a

minimum 25% intensity to be eligible e.g. a full time student completes 120 credits in one year, therefore a part time student would need to complete a minimum of 30 credits per year. Students are able to apply for annual living costs support for up to a maximum of £5,111.25. The amount of grant and loan you are awarded will be dependent on the number of hours you will be studying and your household income.



Apply online now at www.coleggwent.ac.uk/he





You will need to apply for funding before starting your course; the sooner you do this the better and do remember, you will have to reapply for funding every academic year.

You may be able to get extra funding if you have adults or children who are financially dependent on you. This extra funding can include:

- Adult Dependents' Grant (ADG)
- Childcare Grant (CCG)
- Parents' Learning Allowance (PLA)

Disabled Students' Allowance

If you have a disability, long-term health condition, mental health condition or specific learning difficulty you may be eligible for financial support. Disabled Students' Allowances (DSAs) are grants to help pay towards these essential extra costs you may have as a direct result of your disability. More info can be found on the Student Finance Wales website.

Full details of all financial support and how to apply can be found on the Student Finance Wales website www.studentfinancewales.co.uk and Student Finance England website www.gov.uk/student-finance



*Figures and information correct at time of print and may be subject to change. Please check the Student Finance Wales/England website for the latest information before you apply.

HOW TO APPLY FOR HE

Once you've decided which course you'd like to study, applying is easy:

- Online at www.coleggwent.ac.uk/he*
- Phone 01495 333777 (Croesawn alwadau yn Gymraeg)
- In person at any of our five campuses

Course advice and guidance

We'll invite you in to meet a subject tutor who'll give you more details about your course and answer any questions you have.

You'll be invited to enrolment and induction which is usually late August or early September. We'll send you a letter closer to the time to let you know exactly which date you'll need to come in and what you'll need to bring with you. You'll find out more about your course from the staff that will be teaching you, meet others on your course and familiarise yourself with the college campus. You should expect to be in college for up to two days for enrolment before starting your course.



*Please note that when applying for University of Worcester courses the UCAS application route must be used

Apply online now at www.coleggwent.ac.uk/he



COURSE INFORMATION

KEY AND OUR PARTNERS

Throughout the following pages you'll see a number of abbreviations used to indicate which campus a course runs at, the award, how you'll study and the course's accrediting body. Here's your guide to symbols:

Campuses:

BGLZ / Blaenau Gwent Learning Zone

CK / Crosskeys Campus

NP / City of Newport Campus

TLZ / Torfaen Learning Zone

U / Usk Campus

How you'll study:

FT / full time

PT / part time

Accrediting bodies*:

AU / Aberystwyth University

CG / Coleg Gwent

P / Pearson

CMU / Cardiff Met University

USW / University of South Wales

W / University of Worcester

TBC / To be confirmed

Award Key

BA / Bachelor of Arts

BSc Top Up / Bachelor of Science Top Up

Cert HE / HE Certificate

FD / Foundation Degree

HNC / Higher National Certificate

HND / Higher National Diploma

Prof / Professional qualification

Coleg Gwent endeavours to ensure all college publicity materials are correct at time of going to print. However, during the year, details of courses may be subject to change by the college, including awarding bodies, titles and location of courses. **The college reserves the right to withdraw courses should they no longer be deemed viable to run.**



*Terms and conditions relative to different awarding bodies' qualifications can be found under HE policies and procedures on the college website.

EQUINE AND ANIMAL HEALTH

If you have a passion for animals, why not make a career out of it? Take the reins and study one of our equine or animal courses at our beautiful rural-based campus in Usk.

All employers look for experience and you'll get plenty of it on our animal care Foundation Degrees at Usk campus.

We have well-established courses with the University of South Wales and Aberystwyth University so no matter what course you choose, you'll have access to all the facilities you'd expect to find in this industry.

Animal and veterinary students will work in the small animal care centre which is home to a whole host of animals, from rabbits and guinea pigs to more exotic species including reptiles and donkeys, as well as our Blue Cross cat rehoming centre.

Equestrian students will have full use of our indoor and outdoor schools and livery facilities so you'll learn how to care for and manage horses, examine their behaviour and learn about the industry on campus.

You'll learn from expert lecturers who have vast knowledge in their sector, as well as experience, so they'll be able to give you advice on how to find a job when you graduate.



**£21,164
£11.00/HR
TYPICAL
AVERAGE
WAGE IN THIS
INDUSTRY**



Apply online now at www.colegwent.ac.uk/he



What can you study?

Course	Award	Course length	Campus	Validating institution	Full Time/ Part Time
Animal Health and Welfare	FD	2	U	USW	FT
Veterinary Nursing (including placement hours)	FD	3	U	USW	FT
Equine Studies	FD	2	U	AU	FT
Equine Studies (subject to validation)	BSc Top Up	1	U	AU	FT
Animal Health and Wellbeing	BSc Top Up	1	U	USW	FT
Veterinary Nursing	BSc Top Up	1	U	USW	FT

What next?

You may have the option to study for another year full or part time with your chosen university to top up to a full Bachelor's Degree, or you could take your Foundation Degree as a standalone qualification and get work in areas such as veterinary practice, animal behaviour and psychology.

Did you know?

Animal Care Workers, Veterinarians and Veterinary nurses are the top three fastest growing jobs in the Food & Farming sector. [Source: Careers Wales](#)



CONSTRUCTION & THE BUILT ENVIRONMENT

Design and build your own future in the world of construction.

A career in construction is your opportunity to leave a tangible imprint on our neighbourhoods of the future. Our higher level qualifications will give you the skills, knowledge and industry experience employers look for.

If you want to play a part in changing skylines, building beautiful bridges or influencing architecture, you'll learn all the latest techniques and principles to equip you for employment on our HNC in Construction and the Built Environment - the sky really is the limit.

What next?

You may have the option to study for another year full or part time at your chosen university to top up to a full Bachelor's Degree, or you could take your Foundation Degree as a standalone qualification and get work in areas such as civil engineering, project management, infrastructure, architecture or electrical installation.

Did you know?

1 in 4 Construction jobs are expected to be filled by females in 2020.

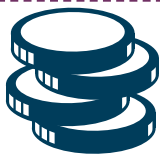
Source: [Careers Wales](#)

What can you study?

Course	Award	Course length	Campus	Validating institution	Full Time/Part Time
Civil Engineering	HND	2	NP	Pearson	PT
Construction and Built Environment	HND	2	NP	Pearson	PT
Construction and Built Environment	HNC	2	NP	Pearson	PT
Civil Engineering	HNC	2	NP	Pearson	PT

Apply online now at www.coleggwent.ac.uk/he





£25,339
£13.17/HR

**TYPICAL AVERAGE
WAGE IN THIS
INDUSTRY**



BUSINESS, MANAGEMENT & TOURISM

Show the world you mean business or let your career take off in tourism.

In our modern world, business and commerce govern almost every aspect of our lives - so all businesses and organisations need strong leaders and switched-on managers. Whether you study the broad subject of business or specialise in a particular sector, you'll be inspired by our excellent teaching teams who bring a whole wealth of industry experience to your learning.



Alternatively you could work in the travel and tourism sector which is one of the most exciting and vibrant in the world. You could be helping someone find their dream holiday, travelling the world as an air steward, helping people party in sunny locations, or progressing through the ranks of a business as a top manager.

Our teaching is relevant, applied and connected with industry so you'll get the skills employers look for in applicants. Our strong emphasis on work-related experience means you'll get hands-on skills you can apply in the workplace.

What next?

If you choose to study a Foundation Degree you may have the option to study for another year full or part time at your chosen university to top up to a full Bachelor's Degree, otherwise you can go straight into employment. Career options, depending on your course, could include management, HR, marketing, finance, trading, business and insurance.

Did you know?

Some of the highest salaries are paid in this sector; an accountant could earn around £70,000 a year.

Source: Careers Wales

Apply online now at www.coleggwent.ac.uk/he

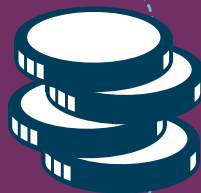


What can you study?

Course	Award	Course length	Campus	Validating institution	Full Time / Part Time
Business Studies	FD	2	TLZ or BGLZ	USW	FT
International Travel & Tourism Management	HND	2	CK	Pearson	FT
Legal Studies	Cert HE	1	NP	USW	FT
AAT	Prof	1	NP	USW	PT
CILEX	Prof	1	NP	Pearson	PT
Retail Management	FD	2	NP	USW	FT
Supply Chain and Logistics (subject to validation)	FD	2	NP	USW	FT

£31,361
£16.30/HR

**TYPICAL
AVERAGE
WAGE IN THIS
INDUSTRY**



“

I find college is better than university as the classes are smaller so you get to know the tutor better and you have that support. The environment is the best thing about studying here; the staff and my classmates are so friendly and we help each other out.”

Brian Beni
24, Foundation Degree
Retail Management



CREATIVE INDUSTRIES

From the bright lights to the spotlight...

The creative industries are growing faster than any other area of the UK economy - great news for talented graduates with a passion for art and design.

Doing a creative job for a living is an enviable position to be in. It's quite

rare to be able to do something you're passionate about for your day job, so if you manage to build a career in the creative industries, it's likely you'll enjoy a lot of job satisfaction.

Our spacious art, design, fashion, media, photography and performance studios are the ideal place to express yourself, experiment with a range of techniques and perfect your specialism.

What can you study?

Course	Award	Course length	Campus	Validating institution	Full Time/ Part Time
Games Art & Design	FD	2	BGLZ	USW	FT
Photography	FD	2	CK	USW	FT
Photography (Subject to validation)	BA	3	CK	CMU	FT
Performing Arts	FD	2	CK	USW	FT
Fashion & Textiles	HND	2	CK	Pearson	FT
Creative Industries (Arts) (Popular Music Technology)	FD	2	CK	USW	FT
Creative Industries (Science) (Popular Music Technology)	FD	2	CK	USW	FT
Illustration	FD	2	CK	USW	FT
Media Production	FD	2	CK	USW	FT
Specialist Makeup	HNC	1	CK	Pearson	FT
Specialist Makeup	HND	1	CK	Pearson	FT

Apply online now at www.coleggwent.ac.uk/he



What next?

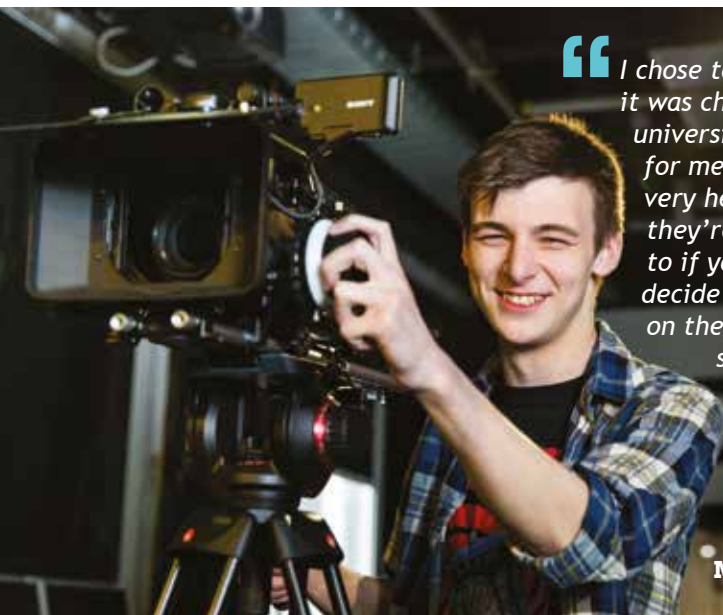
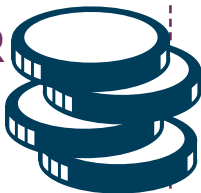
Our creative courses can equip you for a whole range of careers and opportunities in the ever competitive creative industries. Options include media, music, performing, photography, creative design, fashion, gaming and TV and film.

Did you know?

More than 7 out of 10 jobs are self-employed in this industry.

Source: Careers Wales

£30,726
£15.97/HR
TYPICAL
AVERAGE
WAGE IN THIS
INDUSTRY



“ I chose to study at college as it was cheaper than going to university and more convenient for me. The tutors have been very helpful and supportive, they're really good to speak to if you need anything. You decide what you want to study on the course; the first and second years have the same modules so you can see how far you're progressing. ”

Jack Samuel
19, Foundation Degree
Media Production

PUBLIC HEALTH & CARE

Take care of your future.

The care sector offers a diverse range of career opportunities that can be hugely rewarding and make a positive impact on the lives of others.

Our range of health care courses can prepare you for a successful career whether you want to work directly with patients, head up a team to provide top quality care or influence policy at a national or regional level.

If you'd prefer a career in childcare, our childhood studies course will equip you with the skills, knowledge and hands-on experience you'll need in a challenging yet extremely varied and rewarding sector.

With physical and mental health being such a debated and prominent subject in today's society, our specialist Foundation Degrees will prepare you with the understanding to join the conversation.

What next?

You may have the option to study for another year full or part time at your chosen university to top up to a full Bachelor's Degree, or you could take your Foundation Degree as a standalone qualification and get work in areas such as youth work, social work, hospitals, childcare or therapy.

What can you study?

Course	Award	Course length	Campus	Validating institution	Full Time / Part Time
Community Health and Wellbeing	FD	2	BGLZ or TLZ	USW	FT
Childhood Studies	FD	2	CK or BGLZ	USW	FT
Mental Health	FD	2	CK	USW	FT
Psychology	FD	2	CK	USW	FT
Substance Misuse	Cert HE	1yr FT / 2 yr PT	TLZ	USW	FT

Apply online now at www.coleggwent.ac.uk/he





£27,243
£14.16/HR
TYPICAL
AVERAGE
WAGE IN THIS
INDUSTRY



Did you know?

A health care consultant
can earn as much as
£100,000 per year!

Source: Careers Wales

HUMANITIES & EDUCATION

Do you like to stay on the right side of the law? Or maybe you want to make a difference to today's children by teaching?

Study our Criminal Justice Foundation Degree if you're passionate about maintaining order, protecting liberties and rights and are good at resolving disputes. A career in law is for you if you're of a composed and meticulous nature and have your clients' best interests at heart. By training for a job in this sector, you can specialise in fields such as property and injury, plus many more.

A teaching career can be exciting and rewarding, as well as offering you variety and the chance to improve the future prospects of others. Our courses qualify you to teach those over 16 years of age so you'll need to be able to relate well to students of all ages and abilities as the profile of potential students is extremely broad. You could be teaching academic courses to school leavers who want to go onto university, adults who want to retrain and change career or people returning to the classroom after years out of education.

“

Universities don't offer many part time options so this course worked well for me and my childcare. It's also close to home. There's a close knit group of us in the class which makes you more of an individual than just one of hundreds in a lecture theatre. I've been motivated and really excited to get stuck in with my work, I never really felt like this at uni.”

Hannah Williams
23, PCET



Apply online now at www.coleggwent.ac.uk/he



What can you study?

Course	Award	Course length	Campus	Validating institution	Full Time / Part Time
PCET	Cert HE	2	BGLZ	USW	PT
Criminal Justice	FD	2	CK	USW	FT



What next?

Our teaching courses qualify you to teach in post-16 education which could include colleges, sixth forms, adult and community education, work-based training providers and offender learning settings. They do not give you qualified teacher status (QTS) which is required for primary and secondary teaching.



Did you know?

There's an expected 13% growth (2281 new jobs) in the law and legal services sector by 2022.

Source: Careers Wales



SCIENCE, ENGINEERING & TECHNOLOGY

Find the formula for your success

Science surrounds us in everyday life from the motion of cars, the medicines we take to speaking to Siri on our phones. Technological and scientific advances are constantly changing the world we live in; you could work in artificial intelligence and even with robots!

Digital Technology is arguably one of the fastest growing and evolving sectors; there are more jobs than skilled employees so employers are always on the lookout for potential recruits with these skills.

You'll get hands on experience in our purpose-built science laboratories equipped with industry standard equipment. As well as expert lecturers, you'll be supported by technicians with a wealth of industrial experience.

Engineer your future

Engineers are instrumental to everyday life, from the phones we use, the deodorant we wear to the planes we travel in. The sector is very diverse, highly skilled and well paid. Demand for engineers is high, particularly female engineers, so there's always jobs available.

Mechanical engineers design and maintain components and systems using their knowledge of physics and maths, getting to work with advanced materials such as carbon fibre and composite materials.

From small component parts to entire electrical networks or grids; electricity is needed for business, communication and entertainment. If you're attentive to detail and clued up on the principles, electrical engineering is for you.



Apply online now at www.coleggwent.ac.uk/he



What can you study?

Course	Award	Course length	Campus	Validating institution	Full Time / Part Time
Mechanical Engineering	HNC	2	CK	Pearson	PT
Electrical & Electronic Engineering	HNC	2	CK	USW	PT
Electrical & Electronic Engineering	HND	2	CK	USW	FT
Mechanical Engineering	HND	2	CK	Pearson	PT
Computing	HND	2	CK or BGLZ	USW	FT
Computing	HND	2	NP	Pearson	FT
Analytical & Forensic Science	FD	2	TLZ	USW	FT

What next?

Our science courses can lead to many career options including forensic science, forensic computing, a lab technician or research.

If you take a technology route you can progress into areas such as web development, IT infrastructure or network support, data analysis or computer programming.

Did you know?

8,000 engineers will be needed in Wales by 2022.

Source: [Careers Wales](#)

£29,283
£15.22/HR
TYPICAL
AVERAGE
WAGE IN THIS
INDUSTRY



SPORT & PUBLIC SERVICES

Follow in the footsteps of your sporting heroes or keep our communities safe with a job in public services.

From grassroots sport in the community to elite level competition, coaching is vital to the development of fitness, strategy and the psychology of sport. You'll do a series of work placements to give you practical experience in a sporting role; you'll gain an evidence-based approach to coaching, as well as developing your technical understanding.

What next?

You may have the option to study for another year full or part time at your chosen university to top up to a full Bachelor's Degree, or you could take your Foundation Degree or HND as a standalone qualification and get work in areas such as sport development, coaching, the armed forces or public services.

Did you know?

Over 600,000 people work in sports and fitness across the UK in over 230,000 different organisations.

Source: Careers Wales

Public services are at the very heart of our community and those who pursue a career within one of the uniformed or non-uniformed services will be fulfilling a vital role in society, making a real difference to the lives of others. You'll cover all aspects of public services from people management and motivation to the impact of legislation on society.



£26,726
£13.89/HR
TYPICAL
AVERAGE
WAGE
(QUALIFIED)
IN THIS
INDUSTRY

Apply online now at www.coleggwent.ac.uk/he



What can you study?

Course	Award	Course length	Campus	Validating institution	Full Time/ Part Time
Sports Coaching & Development	FD	2	CK or U	USW	FT
Public and Emergency Services	HND	2	U	USW	FT
Sports Conditioning, Rehabilitation and Massage (SCRAM) (Subject to validation)	FD	2	U/CK	CMU	FT



OUR CAMPUSES

1. Blaenau Gwent Learning Zone
2. City of Newport Campus
3. Crosskeys Campus
4. Pontypool Campus
5. Usk Campus
6. **NEW for September 2020 -**
Torfaen Learning Zone

Introducing...**the Torfaen Learning Zone.**

Home to all English language A Level education in Torfaen, the Cwmbran based centre will also provide a range of vocational courses and university level qualifications.

Situated next to Morrisons, Torfaen Learning Zone will be easily accessible via public transport and have an on-site carpark. As well as the 25 subjects on offer, there'll also be a refectory, library, science labs, art studio and performance hall.



Find out more at:

www.coleggwent.ac.uk/campuses

*The Department for Education and Skills Welsh Government
Learner Outcome Report 2017/18

Apply online now at www.coleggwent.ac.uk/he
studentrecruitment@coleggwent.ac.uk | 01495 333777 (Croesawn alwadau yn Gymraeg)

