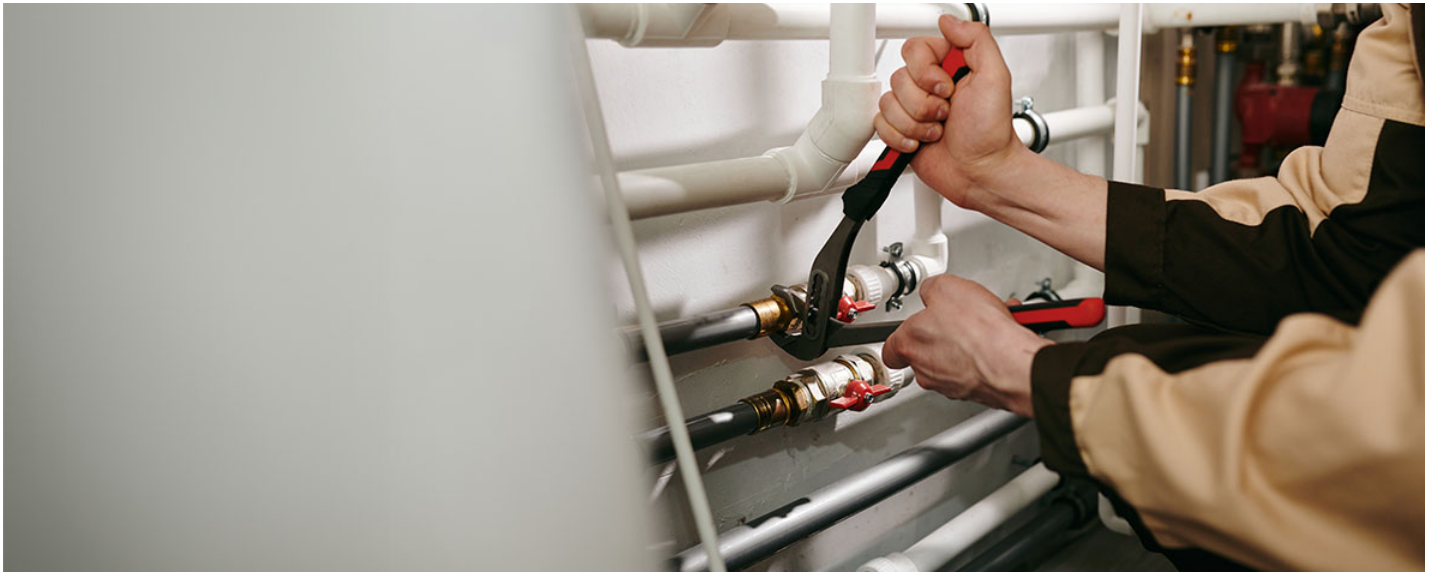


BPEC ACS Gas Renewal



In a nutshell

The domestic gas industry is highly regulated, with assessment provided under the Accredited Certification Scheme (ACS). The college's ACS Gas Centre is an approved BPEC centre offering a wide variety of domestic gas courses ideal for experienced plumbers. On successful completion, you'll be eligible to apply for registration with Gas Safe.

This course is for...

...those who have completed a relevant managed learning programme.

...those who may need re-assessment.

Course content

The College carries out a wide variety of assessments. Certificates are valid for five years after which re-assessment is needed. Training is not a pre-requisite for re-assessment, but it can be provided by the college upon request. To complete initial assessments, you must hold a

COURSE INFORMATION LEAFLET

certificate to evidence you have completed a relevant managed learning programme.

You'll be assessed on your competence to carry out gas work safely in the following areas:

CCN1 - Core domestic gas safety which includes CPA1 (combustion performance analysis natural gas and liquefied petroleum gas)

Please note candidates must hold CCN1 before completing assessment on the following appliances:

CENWAT - Install, exchange, commission, disconnect, service, repair and breakdown of domestic gas fired central heating and hot water boilers and circulators, combination boilers, storage water heaters and instantaneous water heaters.

CKR1 - Install, exchange, service, repair, breakdown and commission of domestic gas cooking appliances

HTR1 - Install, exchange, service, repair breakdown and commission domestic open balanced and fan assisted flued gas fires and wall heaters

MET1/2 - Install, exchange, remove and commission domestic gas meters

CMDDA1 - Carbon monoxide and combustion performance testing using electronic portable gas analysers, and detailed investigation of appliances

Once you've completed CCN1 Core Domestic Gas Safety you can progress to the above domestic appliances and you'll also be eligible to complete changeover from domestic gas to domestic LPG:

CONGLP1PD Changeover domestic gas to domestic LPG for permanent dwellings

CONGLP1LAV Changeover domestic gas to domestic LPG for leisure accommodation

CONGLP1RPH Changeover domestic gas to domestic LPG for residential park homes

HTRLP2 Closed flue gas fires

Entry Requirements

To enrol on this course, you must either:

Hold a current ACS certificate and need reassessment

or

COURSE INFORMATION LEAFLET

Hold an expired ACS certificate (if over 12 months, you will need an initial assessment)

or

Hold a certificate to evidence you have completed a relevant managed learning programme

Additional information

Course fees are as follows:

Domestic

Initial (assessment only)

CCN1

£705

Each appliance will cost £335 per assessment, and will take an extra 0.5 days per assessment.

Re-Assessment (Assessment only)

CCN1

£480

Each appliance will cost £175 per assessment, and will take an extra 0.5 days per assessment.

Re-assessment candidates have the option to purchase an up to date training manual at a cost of £49.50

Changeover from domestic gas to domestic LPG

Re-assessment only (no training)

CONGLP1PD

£75



COURSE INFORMATION LEAFLET

CONGLP1LAV, CONGLP1RPH

£150

HTRLP2

£75 (Fee when taken at the same time as either CONGLP1PD, CONGLP1LAV or CONGLP1RPH)

This course is also available as part of a Personal Learning Account (PLA). PLA is an initiative from the Welsh Government which offers people the chance to access free, part-time courses with flexible and convenient learning that fits around their existing lifestyle (subject to eligibility). If you are aged over 19, living in Wales, in employment and earning less than £30,596 a year and wish to apply for this course as part of the PLA initiative please use the link below to apply:

<https://www.coleggwent.ac.uk/course/LA0045/bpec-acg-gas-reassessments-cenwat1-ckr1-htr1-met1>

Apply online at www.coleggwent.ac.uk

studentrecruitment@coleggwent.ac.uk | 01495 333777 (Croesawn alwadau yn Gymraeg)

